

Statewide Convening 2026



LINKAGES^{2.0}

Building Bridges for Families.

**Strengthening
Linkages
through ICPM,
CPM &
Transforming
CalWORKs**



Danna Fabella
Senior Consultant
CFPIC



Andrea Sobrado
Senior Associate Director
CFPIC



Melissa Connelly
Senior Associate Director
CFPIC

Plus, special guest ***Racquel Alvarado***, Employment and Training Program Coordinator/ Linkages, SonomaWORKS

Our Presenters

By the end of the session, participants will be able to:

1. Describe how ICPM, CPM, and Transforming CalWORKs support family-centered practice.
2. Explain the role of Linkages in connecting these frameworks to improve coordination for families.
3. Identify opportunities to better align Child Welfare and CalWORKs using ICPM/CPM behaviors and aspects of the CalWORKs transformation.
4. Learn about how Sonoma County operationalized their Rise Model.
5. Develop at least one actionable strategy to strengthen cross-system collaboration.

**Learning
Objectives**



CalWORKs



**Child
Welfare**



Leadership



Training

**Let's Get to
Know Each
Other**



**What is a practice model
and why is it important?**

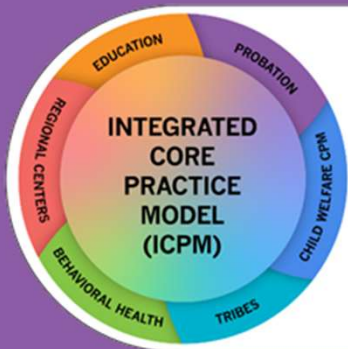
**Warm-Up
Conversation**



- **Aligned goals, values, language and expectations**
- **Shared understanding across different roles, teams, & systems**
- **Observable staff and leadership behaviors**
- **Shared understanding of how we do key parts of our work like engagement, assessment, teaming**
- **Less confusion and duplication for families**
- **Staff role clarity**
- **More effective cross-system collaboration**

**Why have a
Practice
Model?**

Statewide Models



Children, Youth,
and Families
System of Care



CORE PRACTICE MODEL
A Guiding Framework for Child Welfare Practice

Local Models



Examples of Practice Models in California

California Child Welfare Core Practice Model:

The Activation of California's Integrated Core Practice Model in Child Welfare



-  BACKGROUND
-  UNDERLYING FRAMEWORK
-  VALUES
-  LEADERSHIP COMMITMENTS
-  THE EVOLUTION OF THE CPM
-  PRACTICE AND LEADERSHIP BEHAVIORS

The California Child Welfare Core Practice Model (CPM)

California Integrated Core Practice Model:

Collaborative Practice across the Children and Youth System of Care



- BACKGROUND
- THEORETICAL FOUNDATIONS
- VALUES & PRINCIPLES
- PRACTICE ELEMENTS
- PRACTICE BEHAVIORS

The Integrated Core Practice Model (CPM)



E&T Core Practice Model

Sonoma
R.I.S.E.



- **Defer sanctions for the first 90 days families are in the program**
- **Streamline the appraisal process**
- **Reassess Mandatory Activities**
- **Expand Welfare-to-Work Activities**
- **Eliminate unnecessary paperwork**
- **Child Care Confirmation**
- **Transportation**
- **Repeal Work Participant Rate (WPR) penalty pass through**

**Transforming
CalWORKS**



**How does all this fit together
to support Linkages?**

Synthesis



Discuss in Small Groups

- **Strengths:** Where is our Linkages coordination already working well?
- **Gaps / Friction Points:** Where do families experience duplication, confusion, or friction between the two systems?
- **Opportunities for Improvement:** Which CalWORKs reforms could help remove barriers or reduce stress for families?
- **Practice & Collaboration:** How could ICPM/CPM or a model like RISE strengthen our work?

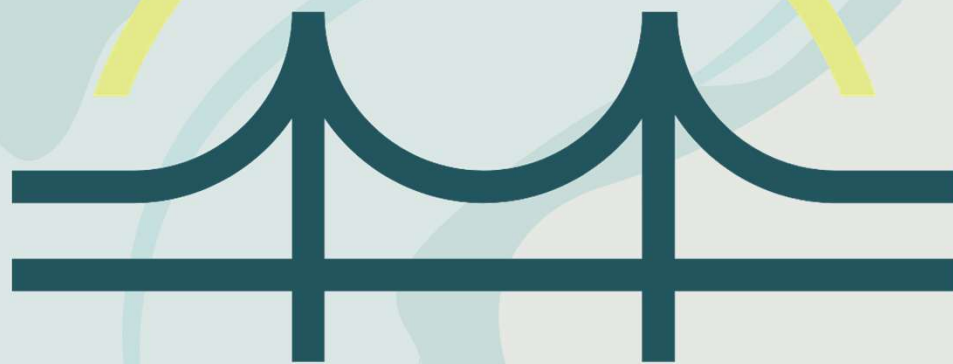
Application Activity



Key Takeaways?

Next Steps

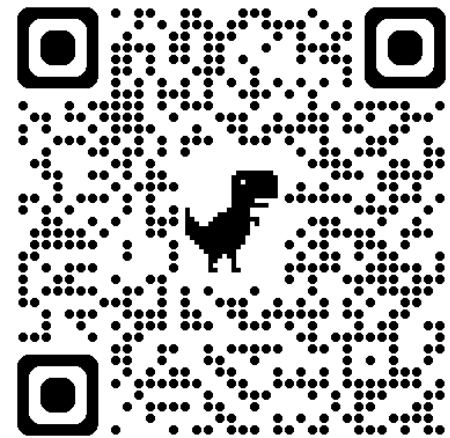
Statewide Convening 2026



LINKAGES^{2.0}

Building Bridges for Families.

Thank you!



melissa.connelly@cfpic.org