



Pathway to Reunification



Families often come in contact with CPS because they need help.
The Department of Human Services is here to help.

If you are a parent who has been referred to CPS or has an open case with CPS, some services are specifically designed to help you navigate the CPS process and better ensure a positive outcome for your children and family.





PAGE OF CONTENTS

| | |
|-------------------------------|----|
| CPS Investigations | 02 |
| Court Proceedings | 04 |
| Approved Services for Parents | 06 |
| Parental Rights | 12 |
| Child Placement | 14 |
| Family Visitation | 16 |
| Housing Support | 18 |

CPS Investigations



We know that receiving a visit from Child Protective Services can be concerning. However, the goal of CPS is for every child to grow up in a safe environment – and that means investigating reports of potential child abuse or neglect.



WHAT TO EXPECT

When CPS receives a call on our Child Protection Hotline, we determine if the report meets the requirements of an investigation according to the law. If it does, a thorough investigation will be conducted to assess child safety and ensure the well-being of every child in the family.

No two reports are handled the same way and are based on each situation. Child abuse and neglect investigations can be conducted by CPS and/or law enforcement. Not all CPS reports require an investigation by law enforcement.

During an investigation

An Emergency Response Social Worker will visit your home and access for risk and safety. CPS's first objective is to enable your children to remain safely with you at home. However, if that is not possible, CPS in partnership with parents, may make temporary arrangements and create a safety plan for your child to stay with an approved relative or family friend while the investigation continues.

During an investigation a social worker will:

- Review your family's history with CPS
- Review your family's criminal history
- Contact the reporter of the concern
- Conduct home visits
- Interview all parties involved, including the parents, children, siblings, and other adults in the home to assess your child's safety and well-being.



If the investigation is unfounded

If no credible evidence of child abuse or neglect is found, you and your family can choose to participate in voluntary support services with a community organization that is designed to help your family overcome struggles and maintain stability. The investigation will then be closed.

If the investigation finds redible evidence

If there is evidence of child abuse or neglect, a Court Intake Social Worker will be assigned to your family. The Court Intake Social Worker will evaluate your case and depending on the severity of the situation, a petition may be filed with the Kern County Juvenile Dependency Court.

The court will hold hearings to determine if your child should be detained and if the allegations in the petition are true or not true. The court will then decide whether or not to place your child under its jurisdiction and become dependent on the court. You still maintain parental rights, even while the case is open.

EMERGENCY REMOVAL AND PROTECTIVE CUSTODY WARRANTS

If it is determined that your child must be immediately separated from you because they need immediate medical care, have suffered, or may suffer serious harm, under emergency circumstances, they will be placed into protective custody by a social worker or a Law Enforcement Officer.

“Serious harm” may come to the child if any of the following occurs:

- A parent or person who has custody fails to provide proper care or supervision.
- A child is not given adequate food, shelter (home), clothing, or medical care.
- A child is suffering severe emotional damage.
- A child’s home is dangerous because of neglect, cruelty, physical abuse, sexual abuse, emotional abuse, or medical neglect by a parent, guardian, or someone else in the home.

When it is determined that your child needs to be separated from you, but the circumstances do not rise to the level of an emergency removal, a Social Worker will submit a Protective Custody Warrant to the Juvenile Court requesting the court’s permission to remove your child.

Whenever possible, your child will be placed with a responsible relative or non-related extended family member. They may also be placed in an approved Resource Family home. The address of the Resource Family home is confidential and cannot be disclosed without a court order unless the placement authorizes the disclosure. You will be given the phone number where your child can be contacted after your child has been taken into custody.



Court Proceedings



Navigating your case with CPS can be hectic and stressful. However, there are resources to help guide you through the process.

If the social worker assigned to your case determines there is credible evidence of maltreatment or neglect, they will file a petition with the Kern County Juvenile Dependency Court on behalf of your child. At that point, the court may place your child under its jurisdiction, and they may become a dependent of the court.

LEGAL REPRESENTATION

When a case is overseen by the Juvenile Court, your child will be assigned an attorney to represent them in court proceedings. You also have the right to have an attorney advise and represent you at all court hearings, and an attorney will be assigned to you at the first court hearing. You may also choose to retain an attorney of your choosing to represent you. You have the right to an interpreter.

COURT HEARINGS

Initial Petition Hearing

One day after the social worker files the petition, the Initial Petition Hearing is held. This is the first time that the Juvenile Court will consider your child's case.

Your attendance and participation in all court hearings are very important! If you do not attend this or any of the court hearings, the court may go ahead without you and you may miss the chance to be heard.

You will be informed of the date, time, and place of the hearing by the CPS social worker assigned to your case. You will also be asked to provide the court with your permanent mailing address so that you may receive notice of the date, time, and place of all future court hearings.

Please keep your social worker informed of any changes to your contact information or mailing address to ensure that we can contact you.

Mediation

Before the Jurisdictional/Dispositional hearings, mediation will be scheduled. Mediation is the opportunity for a parent or legal guardian to meet with a Mediator from the Juvenile Court and the assigned Court Social Worker to discuss the Jurisdictional/Dispositional reports and address any worries before the hearings.

Jurisdiction Hearings

At the Jurisdictional hearing, the Judge will determine if the allegations are determined to be true or not.

DISPOSITION HEARING AND RULING

At the disposition hearing, the court will consider a written report from the social worker and any other evidence and argument offered by any party. You are entitled to receive and read the written report before the hearing. Your child may become a dependent child of the court at this hearing.

The court will then decide the placement of your child. The decision may be to remain in/return to your home, placed in the home of the other parent, placed in the home of a relative, placed with a resource family home, or another type of placement.

At that point, your case will normally fall into one of three categories:

Family Maintenance

Your child will remain at home with one or both parents, however, you may be court-ordered to complete required training or services. CPS will work with you to develop safety plans and connect you with support services and resources.

Family Reunification

Your child will be temporarily placed out-of-home, away from parents, either in foster care or with a relative caregiver. CPS will then work with you to develop a reunification plan and connect you with services so that you may work toward being reunited with your child.

Family Reunification Services Not Offered

Your child will continue to be placed out-of-home, away from parents, either in foster care or with a relative caregiver. CPS will not provide a court-ordered reunification plan for the parent/s and will be working with your child to develop a permanent plan for your child's care. During this time you can continue to participate in counseling and classes but the Social Worker may not be working directly with you to provide those services.

You have the right to talk with the social worker assigned to your case or your attorney at any time. Navigating this process can be stressful and confusing, and these individuals can be useful resources.

Review Hearings

Review hearings will be scheduled every 6 months. Review hearings allow the court the opportunity to acknowledge your hard work, review your compliance with court orders and determine if children who are in placement can safely return home. If your children are in your home, the court may determine when your dependency case can be closed.

CPS will mail you a copy of the report and notice for every review hearing. It is important to always provide the Court and CPS with your current mailing address.

Rehearing/Appellate Rights

You have the right to request a rehearing regarding any orders made by a referee or commissioner. Whether a judge, commissioner, or referee heard your case, you have the right to have the Court of Appeal review certain orders. You may consult with your attorney regarding this right.

Case Records

Records related to the abuse or neglect of children generated by CPS and the Juvenile Court are confidential.

Parents, current and former and foster youth, their attorneys, and others who are eligible may request copies of case records.

To obtain court records, complete a request for CPS records form. You can obtain records if they relate to you or your children.

Return the Request for CPS Records form to Kern County Department of Human Services Attention: Caseload 2261 PO box 511 Bakersfield, Ca 93302

Approved Services for Parents



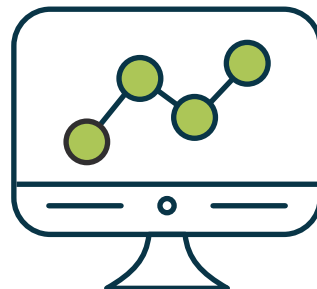
Your caseworker will help you develop a case plan with clear goals and other steps you must take for the court to determine that your child can safely live with you.

It is very important to follow the case plan developed with you and your family. You will need to comply with all court orders, follow the advice of your attorney, attend all the programs and services and report your progress in the programs to your social worker and attorney. The faster you complete the programs and demonstrate behavioral changes, the faster your child may be returned to your physical care.

Every case plan is different. You may be required to go to counseling, attend parent education classes, or receive drug treatment and testing services. It is very important to follow the case plan developed for you and your family. Comply with all court orders, follow the advice provided by your attorney, and attend all the programs and services.



The sooner you enroll in the programs, the sooner you may be able to reunify with your child. If you don't understand what is expected of you, make sure you ask your social worker or attorney.



Parenting Education/Neglect Classes

AB429 IS A VOLUNTARY PROGRAM FOR PARENTS WHO WERE RECEIVING CALWORKS AT THE TIME THEIR CHILDREN WERE REMOVED FROM THE HOME. IT IS DESIGNED TO HELP AND SUPPORT THE PARENT, GUIDING THEM THROUGH TOWARD REUNIFICATION WITH THEIR CHILDREN. AB429 SWS MEET WITH EACH PARENT MONTHLY, GOES OVER THEIR COURT RECOMMENDED/ORDERED CASE PLAN AND PROVIDES SUPPORTIVE SERVICES TO AID IN THEIR REUNIFICATION. AB429 CAN PAY FOR COURT ORDERED CLASSES AND CAN MAKE REFERRALS FOR BEHAVIORAL HEALTH AND SUBSTANCE ABUSE COUNSELING, AS WELL AS TRANSPORTATION ASSISTANCE. THE AB429 SSW WILL COORDINATE WITH THE FAMILY SERVICES SSW TO KEEP EACH OTHER INFORMED OF THE PARENT'S PROGRESS, BARRIERS TO PARTICIPATION AND/OR SUCCESSSES. PARENTS WITHIN AB429 ARE ELIGIBLE FOR MOST WELFARE-TO-WORK ACTIVITIES, SUCH AS JOB SEARCH, NOW WORKSHOPS, CLASSES FOR GED, HIGH SCHOOL DIPLOMA, OR SECONDARY EDUCATION.

| AGENCY | PHONE | LOCATION | FEE (FREE WITH AB429 SERVICES) |
|--|----------------|---------------|---|
| BAKERSFIELD AMERICAN INDIAN HEALTH PROJECT | (661) 327-4030 | BAKERSFIELD | FREE WITH TRIBAL ID |
| BE FINALLY FREE, INC. | (661) 489-5952 | BAKERSFIELD | \$40 INTAKE \$25 PER CLASS |
| BEHAVIORAL INTERVENTION SERVICES | (661) 333-5545 | BAKERSFIELD | \$50 INTAKE \$25 PER CLASS |
| CHILD GUIDANCE CLINIC (HENRIETTA WEILL MEMORIAL CHILD GUIDANCE CLINIC) | (661) 371-3360 | BAKERSFIELD | FREE MULTIPLE OPTIONS & SPECIALTY COURSES |
| HIGHER GROUND CHURCH | (661) 836-0272 | BAKERSFIELD | \$70 INTAKE \$25 PER CLASS |
| LEGACY BEHAVIORAL SERVICES | (661) 861-1133 | BAKERSFIELD | \$5 INTAKE \$20 PER CLASS |
| BAKERSFIELD ADULT SCHOOL (LERDO ONLY) | (661) 391-7340 | LERDO | FREE LERDO ONLY |
| NORTH OF THE RIVER RECREATION AND PARK DISTRICT - NEIGHBORHOODS FOR LEARNING | (661) 392-2029 | BAKERSFIELD | FREE |
| PATHFINDERS GUIDANCE CENTER | (661) 829-5930 | BAKERSFIELD | \$50 INTAKE \$25 PER CLASS |
| PINE MEADOW COUNSELING | (661) 834-7564 | BAKERSFIELD | SLIDING SCALE |
| RIO COUNSELING CENTER - BAKERSFIELD | (661) 327-1345 | BAKERSFIELD | SLIDING SCALE |
| S&T PROFESSIONAL GROUP | (661) 324-1982 | BAKERSFIELD | SLIDING SCALE |
| SOUTHEAST NEIGHBORHOOD PARTNERSHIP FRC | (661) 322-3276 | BAKERSFIELD | FREE |
| THE MISSION OF KERN | (661) 325-4565 | BAKERSFIELD | FREE ONLY FOR RESIDENTS OF THE MISSION |
| Y-EMPOWERMENT INC. | (661) 381-1082 | BAKERSFIELD | SLIDING SCALE |
| BAKERSFIELD RECOVERY SERVICES, INC. | (661) 325-8510 | BAKERSFIELD | \$50 INTAKE \$32 PER GROUP FREE WITH MEDI-CAL |
| NORTH KERN | | | |
| RIO COUNSELING CENTER | (661) 725-2992 | DELANO | SLIDING SCALE |
| SHAFTER HEALTHY START | (661) 746-8690 | SHAFTER | FREE |
| EAST KERN | | | |
| CENTER FOR POSITIVE GROWTH | (760) 379-9194 | LAKE ISABELLA | SLIDING SCALE |
| KERN RIVER VALLEY FAMILY RESOURCE CENTER | (760) 379-2556 | LAKE ISABELLA | FREE |
| CHANGE LANES YOUTH SUPPORT SERVICES | (661) 948-2555 | LANCASTER | \$30 INTAKE |
| EAST KERN FAMILY RESOURCE CENTER | (661) 824-4118 | MOJAVE | FREE |
| LEGACY BEHAVIORAL SERVICES - MOJAVE | (760) 499-1909 | MOJAVE | \$50 INTAKE \$25 PER CLASS |
| OASIS FAMILY RESOURCE CENTER | (760) 375-4357 | RIDGECREST | FREE |
| LEGACY BEHAVIORAL SERVICES - RIDGECREST | (760) 499-1909 | RIDGECREST | \$50 INTAKE \$30 PER CLASS |
| WEST KERN | | | |
| BEHAVIORAL INTERVENTION SERVICES | (661) 333-5545 | TAFT | \$50 INTAKE AND \$25 PER CLASS |
| LAMONT WEEDPATCH FRC | (661) 845-2724 | LAMONT | FREE |

INFORMATION IS SUBJECT TO CHANGE.

Child Neglect/Endangerment 26 and 52 weeks Classes

| AGENCY | 26 WEEKS | PHONE | LOCATION | FEE |
|---|----------|----------------|-------------|-------------------------------|
| BEHAVIORAL INTERVENTION SERVICES | YES | (661) 333-5545 | BAKERSFIELD | \$50 INTAKE \$25 PER CLASS |
| CHILD GUIDANCE CLINIC (HENRIETTA WEILL MEMORIAL CHILD GUIDANCE CLINIC) | NO | (661) 371-3360 | BAKERSFIELD | FREE |
| HIGHER GROUND CHURCH | YES | (661) 836-0272 | BAKERSFIELD | \$70 INTAKE \$25 PER CLASS |
| LEGACY BEHAVIORAL SERVICES | YES | (661) 861-1133 | BAKERSFIELD | \$5 INTAKE \$20 PER CLASS |
| PINE MEADOW COUNSELING | NO | (661) 834-7564 | BAKERSFIELD | SLIDING SCALE |
| THE PROFESSIONAL GROUP | YES | (661) 324-1982 | BAKERSFIELD | SLIDING SCALE |
| RIO COUNSELING CENTER, BAKERSFIELD | YES | (661) 327-1345 | BAKERSFIELD | SLIDING SCALE |
| S & T PROFESSIONAL GROUP | YES | (661) 324-1982 | BAKERSFIELD | SLIDING SCALE |
| RIO COUNSELING CENTER, DELANO | YES | (661) 725-2992 | DELANO | SLIDING SCALE |
| CHANGE LANES YOUTH SUPPORT SERVICES | YES | (661) 948-2555 | LANCASTER | \$30 INTAKE |
| LEGACY BEHAVIORAL SERVICES - MOJAVE | YES | (760) 499-1909 | MOJAVE | \$50 INTAKE \$25 PER CLASS |
| LEGACY BEHAVIORAL SERVICES - RIDGECREST | YES | (760) 499-1909 | RIDGECREST | \$50 INTAKE \$30 PER CLASS |

Anger Management Classes

| AGENCY | PHONE | LOCATION | FEE |
|--|----------------|------------------|-------------------------------|
| CITYSERVE NETWORK | (661) 558-4441 | BAKERSFIELD | FREE |
| BEHAVIORAL INTERVENTION SERVICES | (661) 333-5545 | BAKERSFIELD | \$50 INTAKE \$25 PER CLASS |
| COMMUNITY SERVICE ORGANIZATION, INC. (CSO) | (661) 327-9376 | BAKERSFIELD | \$60 INTAKE \$25 PER CLASS |
| HIGHER GROUND CHURCH | (661) 836-0272 | BAKERSFIELD | \$70 INTAKE \$25 PER CLASS |
| LEGACY BEHAVIORAL SERVICES | (661) 861-1133 | BAKERSFIELD | \$5 INTAKE \$20 PER CLASS |
| PATHFINDERS GUIDANCE CENTER | (661) 829-5930 | BAKERSFIELD | \$50 INTAKE \$25 PER CLASS |
| RIO COUNSELING CENTER, BAKERSFIELD | (661) 327-1345 | BAKERSFIELD | SLIDING SCALE |
| S&T PROFESSIONAL GROUP | (661) 324-1982 | BAKERSFIELD | SLIDING SCALE |
| THE PROFESSIONAL GROUP | (661) 324-1982 | BAKERSFIELD | SLIDING SCALE |
| VANGUARD COMMUNITY CENTER | (661) 871-8481 | BAKERSFIELD | \$50 INTAKE \$25 PER CLASS |
| Y-EMPOWERMENT INC. | (661) 381-1082 | BAKERSFIELD | SLIDING SCALE |
| BAKERSFIELD ADULT SCHOOL (LERDO ONLY) | (661) 391-7340 | LERDO | FREE LERDO ONLY |
| RIO COUNSELING CENTER, DELANO | (661) 725-2992 | DELANO | SLIDING SCALE |
| CENTER FOR POSITIVE GROWTH | (760) 379-9194 | LAKE ISABELLA | SLIDING SCALE |
| CHANGE LANES YOUTH SUPPORT SERVICES | (661) 948-2555 | LANCASTER | \$30 INTAKE |
| LEGACY BEHAVIORAL SERVICES | (760) 499-1909 | MOJAVE | \$50 INTAKE \$25 PER CLASS |
| LEGACY BEHAVIORAL SERVICES | (760) 499-1909 | RIDGECREST | \$50 INTAKE \$30 PER CLASS |

INFORMATION IS SUBJECT TO CHANGE.

Domestic Violence as a Victim Classes

| AGENCY | PHONE | LOCATION | FEE |
|---|----------------|-------------|--|
| THE OPEN DOOR NETWORK SPANISH AVAILABLE* (INDIVIDUAL COUNSELING AVAILABLE FOR WOMEN AND CHILDREN OF DOMESTIC ASSAULT/SEXUAL ASSAULT, EMERGENCY SHELTER FOR VICTIMS, SELF-DEFENSE CLASSES, ASSISTANCE WITH RESTRAINING ORDERS. DOMESTIC VIOLENCE (AWARENESS) CLASSES FOR VICTIMS OF DV) | (661) 322-0931 | BAKERSFIELD | FREE |
| CHILD GUIDANCE CLINIC (HENRIETTA WEILL MEMORIAL CHILD GUIDANCE CLINIC) | (661) 371-3360 | BAKERSFIELD | FREE |
| HIGHER GROUND CHURCH | (661) 836-0272 | BAKERSFIELD | \$70 INTAKE \$25 PER CLASS |
| PATHFINDERS GUIDANCE CENTER SPANISH AVAILABLE* | (661) 829-5930 | BAKERSFIELD | \$50 INTAKE \$25 PER CLASS |
| RIO COUNSELING CENTER, BAKERSFIELD | (661) 327-1345 | BAKERSFIELD | SLIDING SCALE |
| S&T PROFESSIONAL GROUP | (661) 324-1982 | BAKERSFIELD | SLIDING SCALE |
| VANGUARD COMMUNITY CENTER | (661) 871-8481 | BAKERSFIELD | \$50 INTAKE \$25 PER CLASS |
| THE MISSION OF KERN | (661) 325-4565 | BAKERSFIELD | FREE ONLY FOR RESIDENTS OF THE MISSION |
| RIO COUNSELING CENTER, DELANO | (661) 725-2992 | DELANO | SLIDING SCALE |
| CHANGE LANES YOUTH SUPPORT SERVICES | (661) 948-2555 | LANCASTER | \$30 INTAKE |

Domestic Violence as a Perpetrator Classes

| AGENCY | PHONE | LOCATION | FEE |
|--|----------------|------------------|-------------------------------|
| BEHAVIORAL INTERVENTION SERVICES | (661) 333-5545 | BAKERSFIELD | \$50 INTAKE \$25 PER CLASS |
| COMMUNITY SERVICE ORGANIZATION, INC. (CSO) | (661) 327-9376 | BAKERSFIELD | \$60 INTAKE \$25 PER CLASS |
| HIGHER GROUND CHURCH | (661) 836-0272 | BAKERSFIELD | \$70 INTAKE \$25 PER CLASS |
| LEGACY BEHAVIORAL SERVICES | (661) 861-1133 | BAKERSFIELD | \$5 INTAKE \$20 PER CLASS |
| PATHFINDERS GUIDANCE CENTER | (661) 829-5930 | BAKERSFIELD | \$50 INTAKE \$25 PER CLASS |
| RIO COUNSELING CENTER, BAKERSFIELD | (661) 327-1345 | BAKERSFIELD | SLIDING SCALE |
| S&T PROFESSIONAL GROUP | (661) 324-1982 | BAKERSFIELD | SLIDING SCALE |
| VANGUARD COMMUNITY CENTER | (661) 871-8481 | BAKERSFIELD | \$50 INTAKE \$25 PER CLASS |
| Y-EMPOWERMENT INC. | (661) 381-1082 | BAKERSFIELD | SLIDING SCALE |
| BAKERSFIELD ADULT SCHOOL (LERDO ONLY) | (661) 391-7340 | LERDO | FREE LERDO ONLY |
| RIO COUNSELING CENTER, DELANO | (661) 725-2992 | DELANO | SLIDING SCALE |
| CENTER FOR POSITIVE GROWTH | (760) 379-9194 | LAKE ISABELLA | SLIDING SCALE |
| CHANGE LANES YOUTH SUPPORT SERVICES | (661) 948-2555 | LANCASTER | \$30 INTAKE |
| LEGACY BEHAVIORAL SERVICES | (760) 499-1909 | MOJAVE | \$50 INTAKE \$25 PER CLASS |
| LEGACY BEHAVIORAL SERVICES | (760) 499-1909 | RIDGECREST | \$50 INTAKE \$30 PER CLASS |

INFORMATION IS SUBJECT TO CHANGE.

Substance Abuse Treatment

Contact the Gateway Screener via telephone, 24/7 Hour Access Line at 1-866-266-4898 to complete a screening.

OR, or you can meet with a Gateway screener in person at the locations listed to the right:



KERN COUNTY SUPERIOR COURT BUILDING
1415 TRUXTUN AVENUE, BAKERSFIELD, CA 93301,
4TH FLOOR (661) 868-6453

JUVENILE JUSTICE CENTER
2100 COLLEGE AVENUE BAKERSFIELD, CA 93305

MARY K. SHELL
2151 COLLEGE AVENUE BAKERSFIELD, CA 93305



Mental Health Services

If you have been recommended to complete a mental health assessment and treatment plan, you can start with one phone call to Kern Behavioral Health Services (KBRHS). They will refer you to the right services to meet your needs. It is important that you are honest with your provider to ensure you are linked with the right plan for you. If you are unsure why you have been referred to mental health services, call your Social Worker for further understanding. If you prefer in person assistance, stop by Mary K Shell Mental Health Center 2151 College Avenue, Bakersfield, CA 93305 (in the same parking lot as your CPS court hearings).

KBRHS REFERRAL HOTLINE NUMBER: (884) 863-7002

FOR IMMEDIATE OR CRISIS MENTAL HEALTH NEEDS CALL ANYTIME: 711 OR 1-800-991-5272

SUICIDE HOTLINE: 1-800-273-8255

Tribal Family Resources

The Bakersfield American Indian Health Project provides support for Tribal families involved with child welfare through the Protectors of our Young Feathers program. A Family Advocate is available to assist parents and youth in building healthy lifestyles, cultural exposure, life skills, counseling, and community connections. They also serve developmentally delayed youth with social, emotions, physical, spiritual growth, and development.

- Counseling Services
- Court Advisors
- Foster Parent Enrollment
- Cultural and Traditional Care
- Housing Support
- Youth Prevention Programs

REFERRALS@BAKERSFIELDAIHP.ORG
1617 30TH ST., 93301
(661) 327-4030

INFORMATION IS SUBJECT TO CHANGE.



Learning/Failure to Protect Classes

| AGENCY | PHONE | LOCATION | FEE | NOTES |
|---|----------------|-------------|-----------------|---|
| OPEN DOOR NETWORK SPANISH AVAILABLE* | (661) 322-0931 | BAKERSFIELD | | DOMESTIC VIOLENCE |
| BEHAVIORAL INTERVENTION SERVICES | (661) 333-5545 | BAKERSFIELD | FEE FOR SERVICE | SEXUAL, EMOTIONAL, PHYSICAL ABUSE, DOMESTIC VIOLENCE, NEGLECT |
| HIGHER GROUND CHURCH | (661) 836-0272 | BAKERSFIELD | FEE FOR SERVICE | CLASS INCLUDES PHYSICAL, EMOTIONAL, SEXUAL ABUSE, CHRONIC NEGLECT. |
| CHILD GUIDANCE CLINIC (HENRIETTA WEIL MEMORIAL CHILD GUIDANCE CLINIC) | (661) 371-3360 | BAKERSFIELD | FREE | CLASS INCLUDES PHYSICAL ABUSE, ADULT MENTAL HEALTH DOMESTIC VIOLENCE. *DOES NOT INCLUDE SEXUAL ABUSE |
| LEGACY BEHAVIORAL SERVICES | (661) 861-1133 | BAKERSFIELD | FEE FOR SERVICE | CLASS INCLUDES SEXUAL ABUSE, FAMILY VIOLENCE, NEGLECT *DOES NOT INCLUDE PHYSICAL ABUSE |

Physical Abuse as a Perpetrator Classes

| AGENCY | PHONE | LOCATION | FEE |
|-----------------------------|----------------|-------------|-----------------|
| CHILD GUIDANCE CLINIC | (661) 371-3360 | BAKERSFIELD | FREE |
| PATHFINDERS GUIDANCE CLINIC | (661) 829-5930 | BAKERSFIELD | FEE FOR SERVICE |

Sexual Abuse as a Perpetrator Classes

| AGENCY | PHONE | LOCATION | FEE |
|-----------------------------|----------------|-------------|-----------------|
| PATHFINDERS GUIDANCE CENTER | (661) 829-5930 | BAKERSFIELD | FEE FOR SERVICE |
| S&T PROFESSIONAL GROUP | (661) 324-1982 | BAKERSFIELD | FEE FOR SERVICE |

INFORMATION IS SUBJECT TO CHANGE.

Parental Rights



If your child is placed in foster care, legal custody is temporarily transferred to CPS and your child will become a dependent of the court. During that time, there are several laws in place to ensure that your child's rights are protected, which are outlined in the Foster Youth Bill of Rights.

Know Your Rights

Even while your child is under CPS custody and your case is open, you are still their parent in the eyes of the law, and you can make educational and medical decisions on behalf of your child, as long as the Juvenile Court has not limited those rights.

These rights may only be limited or terminated if:

- Your child is in legal guardianship. While in legal guardianship, your parental rights are temporarily suspended and your child's guardian maintains parental rights.
- Your child has been freed for adoption. If your parental rights have been terminated by the court, your child has been freed for adoption and the child's adoptive parent maintains parental rights.
- The juvenile court has explicitly restricted your parental rights, at which point a surrogate will be appointed to make specific decisions.

Incarcerated rights

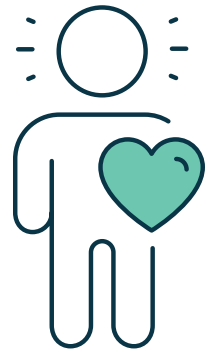
If you become incarcerated at any point, always keep in touch with your social worker and attorney. Your Social Worker does accept collect calls. Keep them advised of your housing location and programs you are enrolled in while incarcerated as well as your release date.

While you are incarcerated, as with all other parental rights, you will still maintain your rights, unless your rights are limited by the Juvenile Court. If you are incarcerated you will be:

- Mailed all important information, including court reports and case plan reminders.
- Transported to and from court hearings if you are in a Kern County Jail facility or California Department of Corrections and Rehabilitation prison.
- Provided court-ordered visitations with your child.
- Provided opportunities to complete classes and services according to your case plan.

Medical Decision-Making

You hold your child's medical rights and have the right to make medical decisions for your child. You will be contacted if your child experiences any major illness or injuries. If your child is placed outside of your home, your child's caregiver will be permitted to seek general medical care, including physical and dental exams and immunizations. The right to make medical decisions can be limited by the Juvenile Court, and in this situation, a surrogate will be appointed by the court to make medical decisions for your child.



EDUCATIONAL DECISION-MAKING

You hold your child's educational rights and have the right to make educational decisions for your child. Your child can continue going to their school of origin and should not be moved to a new school without your consent.

Your educational rights include:

- Having your child enrolled in their school of origin following a change in their residence for the remainder of the current school year.
- Participation in the development and update of your child's IEP.
- Knowledge of your child's academic performance.
- Your child's social worker and educational providers are required to ensure that your child feels safe, comfortable, and is successful in his/her/their academic settings. Your child has the right to the same educational opportunities as all students, consistent with their age and developmental level.

Your child's educational rights include:

- A stable schooling placement that is the least restrictive for them.
- Access to academic resources, services, extracurricular, cultural, and enrichment activities.
- Opportunity to attend school regularly with minimal disruption.
- Enrollment at their school of origin following a change in their residence for the remainder of the current school year.

School site social workers

School social workers are not CPS employees and are available at all school sites in Kern County to ensure that your child's rights are protected and they are receiving appropriate services while at school.

Child Placement

Having your child separated from you, even temporarily, can be traumatic and upsetting. Child Protective Services (CPS) will make efforts to locate biological family and non related adults close to the child through the Family Finding Unit.

CPS operates from a family-centered approach, making every effort, under court supervision, to reunite you with your child or other family members whenever and as quickly as possible.



Family Urgent Response System (FURS)

Family Urgent Response System (FURS) is a 24 hour hotline and response system that provides an array of support to caregivers and youth. It is available for all youth who are in foster care or formerly in foster care.

Contact FURS:

Telephone Number: 833-939-3877

Website: www.Cal-FURS.org

Email Address: info@cal-furs.org

Out-of-Home Placement

All caregivers must go through the Resource Family Approval (RFA) process to ensure that they are able to safely and effectively look after the children in their care.

CPS will make every effort to ensure that siblings who must be placed in out-of-home care remain together in the same placement.

Relative Caregivers

CPS seeks to place children with a family member or a non-related adult close to the child (called a “non-related extended family member”) to provide as much stability and familiarity for your child as possible. Be sure to tell CPS about any relatives or friends who you believe are able to safely care for your child. Family Members or adults close to the child can call 661-631-6666 to obtain information on how to apply for placement.



Jamison Center

The Jamison Children’s Center is a 24-hour Temporary Shelter Care Facility, operated by the Kern County Human Services Department. As the only emergency shelter in Kern County for abused, neglected, and exploited children, Jamison Children’s Center temporarily houses children who are taken into protective custody by law enforcement agencies or social workers. Children are placed in the Jamison Center on a temporary, emergency placement while a suitable out-of-home placement is located.

Resource Families

Resource Families, formerly known as foster families, are an individual or family that the county determines has successfully met the application and assessment criteria necessary for providing care for a child under the jurisdiction of the Juvenile Court. Resource Families have a completed background check, home environment assessment, family evaluation, and have received training in how to care for the children who are placed with them. These Resource Families are informed that they are not the child’s parent, but instead a temporary caregiver responsible for the child’s well-being while their parents are working to reunify their family.

Foster Family Agencies (FFA)

CPS sometimes uses licensed private Foster Family Agencies (FFA) for the placement of children who require more intensive care as an alternative to STRTP. FFA are organized and operated on a non-profit basis and are engaged in the following activities: recruiting, certifying, and training caregivers, providing professional support to caregivers, and finding homes or other temporary or permanent placements for children who require more intensive care.

Short Term Residential Treatment Programs (STRTP)

California’s Continuum of Care Reform (CCR) recommends that foster children and youth remain in a family setting while they are separated from their parents whenever possible. However, for children who require intensive support and cannot be placed in a family-based setting, Short Term Residential Treatment Programs (STRTP) provide short-term, high-quality, intensive therapeutic intervention services. STRTP are not considered long-term placement options. All services are designed to stabilize, support, and transition children and youth into a family setting when they are ready.

Family Visitation



If your child is placed in out-of-home care, you are entitled to have periodic telephone contact with your child, as long as that contact is not detrimental to your child or disruptive to their placement. In-person visits will be arranged according to your court ordered Visitation Plan, and as ordered by the Juvenile Dependency Court.

If more than one of your children needs to be placed out-of-home, CPS will work to keep siblings together. This is both easier for parents and takes less of an emotional toll on children if they can remain with their brothers and sisters. If your children are not able to be placed in the same home together, sibling visitations will also occur.

After your case is heard in Juvenile Dependency Court, the court will determine how often, and under what circumstances, you are able to visit your child while you are working toward reunification. These visits may be supervised, depending on the specifics of your case.

Your child's Social Worker is critical in making recommendations for these visitations, so it is important to work with the Social Worker to establish and adhere to the Family Visitation Plan established early on in the process.

If you are not getting the court-ordered visitation with your child, you are encouraged to contact your social worker or their supervisor.



Visitation while Incarcerated

Visitation will be provided to incarcerated parents if you are incarcerated in a California Department of Corrections Facility or a Kern County Detention Facility. Incarcerated visits will be provided according to the visitation order made by the Juvenile Court.

Comfort Calls

Comfort calls are telephone calls intended to maintain and build the parent-child bond and establish a relationship between the caregivers and the bio parent/adult receiving services. Comfort Calls do not take the place of any court-ordered visitation including phone visits. Comfort calls are facilitated through the primary Social Worker and are phone calls that are focused on respectful and appropriate telephone communication about the child and their well-being, not about allegations or case specifics. These comfort calls are not court-ordered and the frequency and duration of these calls will be determined by what is in the best interest of the child and the availability of the child and Resource Parent.



Visitation with Other Family Members

Often, family members who are not the parents of a child will request visitation or want to have visitation with a child. Efforts are made to keep children connected to their families and important people in their life prior to their removal. If a family member wants to visit a child placed in out-of-home care, contact the assigned Social Worker to further discuss visitation options.

When a teen parent in foster care has custody of his or her non-dependent child, the court can only order visits between the teen parent, their parent(s) and appropriate family members. A dependent teen parent who has custody of their non-dependent child is the only person who has the right to make visitation decisions regarding the non-dependent child.

ADDITIONAL COUNTY SUPPORT

Kern County Department of Human Services works alongside other Kern County agencies to ensure that we are able to provide comprehensive services to parents and families in need of assistance. Check out the resources listed for more information.

- CalFresh
- Employment & Financial services
- Kern Behavioral Health and Recovery Services
- 211
- Educational Services
- FURS
- Dream Center
- Kern Public Health
- Kern County Probation



Housing Support



Department of Human Services - HOUSING SUPPORT UNIT
100 East California Avenue, Bakersfield CA 93307
Services available countywide (661) 631-6688

The Housing Support Unit's mission is to centralize homelessness programs and collaborate with the local coordinated Entry System to understand and meet the needs of homeless families, individuals, and foster youth in our community.

CalWORKs Homeless Assistance (HA)

Aims to help CalWORKs families meet the reasonable costs of securing housing. The CalWORKs HA program serves eligible CalWORKs recipients, or apparently eligible CalWORKs applicants, who are homeless or at-risk of homelessness.

- Temporary Homeless Assistance (THA): 16 days of temporary shelter including hotel or motel costs.
- Permanent Homeless Assistance (PHA): Helps families secure housing and/or prevent eviction.

CalWORKs Housing Support Program (HSP)

HSP provides housing stability and assists in securing and maintaining permanent housing for CalWORKs families experiencing, or at-risk of, homelessness without preconditions.

Housing and Disability Advocacy Program (HDAP)

HDAP assists people experiencing homelessness who are likely eligible for disability benefits by providing advocacy for disability benefits as well as housing supports.

Family Stabilization Program (FSP)

FSP is an extension of Welfare-to-Work designed to help families experiencing crisis or additional barriers to work towards self-sufficiency.

Bringing Families Home (BFH)

BFH serves homeless families involved with the child welfare system and is designed to offer housing supports in order for families to successfully reunify.

Bringing Families home goals include:

- Reducing the number of families in the child welfare system experiencing or at risk of homelessness.
- Increasing family reunification
- Preventing Foster Care placement

DHS and partnering agencies offer financial assistance and supportive services, including but not limited to: rental assistance, housing navigation, case management, security deposits, utility payments, moving costs, hotel and motel vouchers, and legal services.



To view an online version of this brochure, visit
<https://www.kcdhs.org/resources/pathway-to-reunification>

100 E. California Ave. • Bakersfield, CA 93307
Tel 661.631.6600 • Fax 661.631.6631
TTY 800.735.2929 • www.KCDHS.org

KCDHS is an equal opportunity agency.

