

Welcome to the 2024 Central Regional Meeting

December 5, 2024

9:00 am – 12:00 pm



The CFPIC Linkages Team



Linkages Program Director
Danna Fabella



CFPIC Associate Director
Melissa Connelly



Linkages Program Associate
Andrea Lewis

Housekeeping

- Please have your camera ON whenever possible
- Make sure you are MUTED if you are not talking
- Change your screen name to include your first name, last name, and county

Thank You!

Today's Agenda

Introductions/Ice Breaker

Linkages and Prevention

AB 135: CalWORKs Family Reunification (Cash Aid)

Closing with Exit/Planning Survey



Please share:

- Name
- County
- Program
- Linkages Role
- What's one fun thing you plan to do over the holiday break?



Central Region

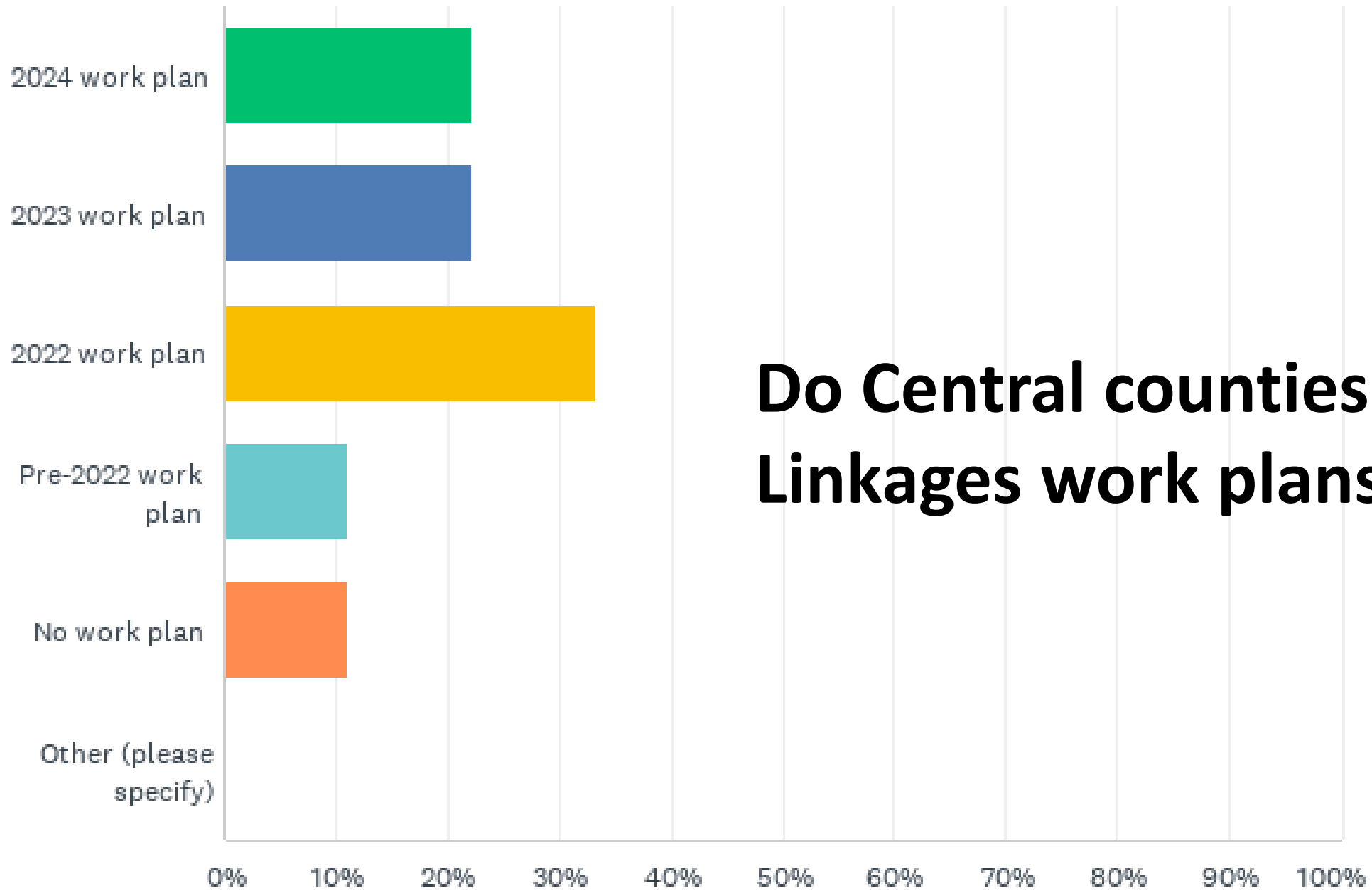
- Fresno
- Kern
- Kings
- Madera
- Merced
- San Joaquin
- San Luis Obispo
- Santa Barbara
- Stanislaus
- Tulare
- Ventura

Top Three Challenges Reported by Central Counties

**Turnover/Staffing
Challenges
(78%)**

**Preparing for AB135
(55%)**

**Communication
(44%)**

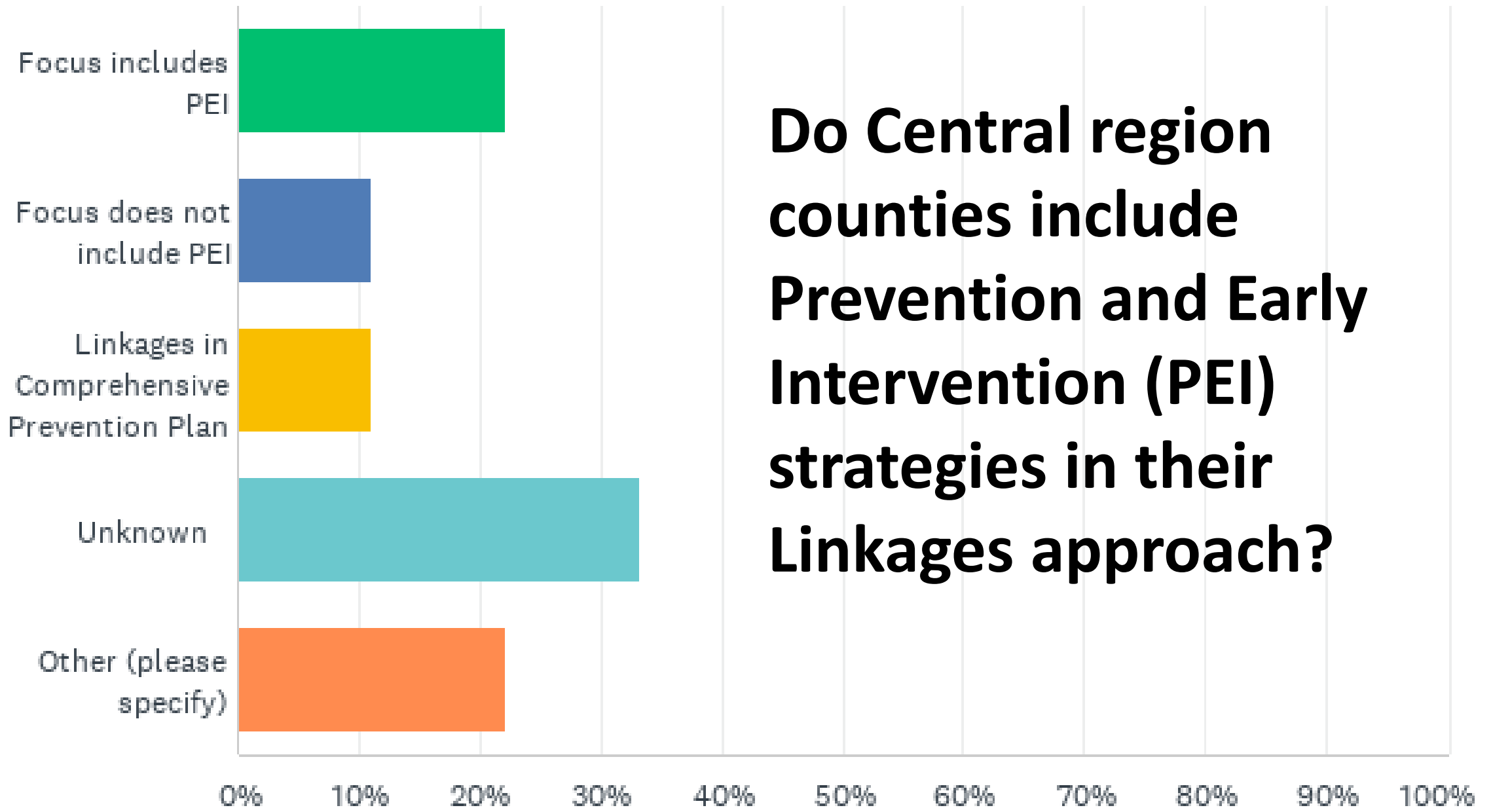


Do Central counties have Linkages work plans?

Linkages and Prevention

- Linkages 2.0
- Linkages Prevention and Early Intervention (PEI) Committee
- Protective Factors Brochure
- Screening Tool Development
- Connecting Linkages to County Comprehensive Prevention Plans

Do Central region counties include Prevention and Early Intervention (PEI) strategies in their Linkages approach?



PREVENTION FRAMEWORK & LINKAGES

Primary / Universal

Programs targeted at entire population to provide support and education before problems occur

- Family support info and resources for CalWORKs families

Secondary

Programs targeted at families in need to alleviate identified problems and prevent escalation

- CW - Family Stabilization & Home Visiting
- CWS - Differential Response
- ER/CalWORKs service coordination

Tertiary

Provide interventions for children experiencing maltreatment

- Child Welfare /CalWORKs service & case planning coordination for FM and FR



Protective Factors Building Strong Families:

Resources and
Tips

Why Protective Factors?

Protective factors help families succeed and thrive, even in the face of risks and challenges. There are many ways that you can build on your own family's strengths and offer support to other families when they need it.

Five Protective Factors



Parental Resilience

Resilience is managing stress and functioning well, even when things are difficult.



Social Connections

It's easier to handle parenting challenges when positive relationships with family, friends, and neighbors are consistent.



Knowledge of Parenting and Child Development

By learning what children need in order to thrive, you can provide them the best start in life.



Concrete Support in Times of Need

Knowing where to get help in times of need can make things a lot easier.



Social and Emotional Competence of Children

Helping children develop social-emotional competence teaches them to manage emotions and build healthy relationships.

Linkages Prevention and Early Intervention (PEI) Committee Primary Prevention Strategy: Customizable Protective Factors Brochure

Instructions for Counties

Prior to printing, distributing and publishing this brochure online, please do the following:

1. Review each protective factor and make a list of relevant resources in your community associated with each factor.
2. If you are unable to identify local resources, consider including the CDSS parent resource website and helplines listed there: <https://www.cdss.ca.gov/inforesources/ocap/parent-resources>
3. Reach out to each resource to make sure you have accurate contact information and to confirm cost or eligibility requirements.
4. Enter the available resource, contact information and eligibility requirements in the editable space for each factor. Some local resources may address multiple factors – be sure to include them in each area they address.
5. Make sure to use any county logos or other specific county information your agency has identified (this may include specific colors or fonts). If your agency does not have specific requirements for brochures, make sure to use a font that is easy to read and use colors that will work even if the brochure is printed in black and white.
6. Follow any county accessibility rules for online and printed materials.

Five Protective Factors

Each of us is born into a unique set of circumstances that can impact the course of our lives. Identified as the social determinants of health, these circumstances can be either protective factors (things that increase the likelihood of positive outcomes) or risk factors (things that increase the likelihood of challenges). Research studying health outcomes identified five key protective factors linked with increased likelihood of positive outcomes.

These are the 5 Protective Factors:

1. Parental resiliency
2. Access to concrete supports in times of need
3. Knowledge of parenting and child development
4. Social connections
5. Child social and emotional competence

Building protective capacities within families to promote positive outcomes, strengthen communities, and improve child well-being is the job of all child and family serving organizations. This brochure was developed by the Statewide Linkages Project to help counties promote awareness of the protective factors and share information about state and local resources to assist families in building protective factors, increasing resiliency and reducing risk. Each section of the brochure looks at one of the protective factors and provides:

1. A definition of the protective factor
2. Family friendly suggestions for how to feel strong in that factor
3. Local connections the family can make if they want more support related to that factor

Check out the tips and resources listed below!

Here is an
example of a
customized
brochure from
LA:



Social and Emotional Competence of Children

To Help your Child Develop these Skills:

- Respond to your child with warmth and consistency.
- Teach your child to use words to express how he or she feels.
- Allow your child to express his or her emotions safely.

Social and Emotional Competence of Children Tune-Ups:

- Look for opportunities to praise your child for making the right choices and for showing friendly behaviors, such as sharing a favorite toy.
- Create a regular family check-in routine to talk about the day.

RESOURCES IN YOUR NEIGHBORHOOD:

New Economics for Women Family Resource Center

6931 Van Nuys Blvd., Suite 201 (818) 786-4098

Tutoring, mentoring, youth leadership, youth cultural activities, youth recreational activities

Boys & Girls Club of San Fernando Valley

11251 Glenoaks Blvd. (818) 896-5261

After school programs, mentoring, tutoring, fitness, recreation, health & life skills programs, art & leadership programs

Boys & Girls Club of Santa Clarita Valley

19425 Stillmore Street (661) 251-6017 -

Scvboysandgirlsclub.org

Homework help, tutoring and after school activities

The Road Ahead Family Services

16944 Ventura Blvd. #24 (818) 745-2515

Transitional Age Youth (TAY) social skills group

Material adapted with permission from the Center for the Study of Social Policy, www.strengtheningfamilies.net

Linkages and Prevention in Kern

- Mary Switalski (Eligibility and Program Development)
- Susan Lawol (Liaison for CALAIM, SOCIT/AB 2083)
- Elizabeth Dockstader (Employment and Financial Services)





Building the Village: Strengthening Capacity in Kern County through Collaboration

Mary Switalski, Susan Lawol, Elizabeth Dockstader





“I Am Because
We Are”

Spirit of Ubuntu



CalWorks and Child Welfare in Kern County

Collaborating to Build Better Family Support

**CAL
Works
FSP**



LINKAGES
CalWORKs & Child Welfare Collaboration

2.0

**Child
Welfare
FR**

Kern County's Prevention Strategy

Family Stabilization Program and Linkages Project

Bridging Programs and Systems

- **Family Stabilization Program:**

- Intensive Case Management
- Housing Assistance
- Behavioral Health Services
- Domestic Abuse Support:
- Transportation Assistance:
- SSI Advocacy:
- Counseling Services

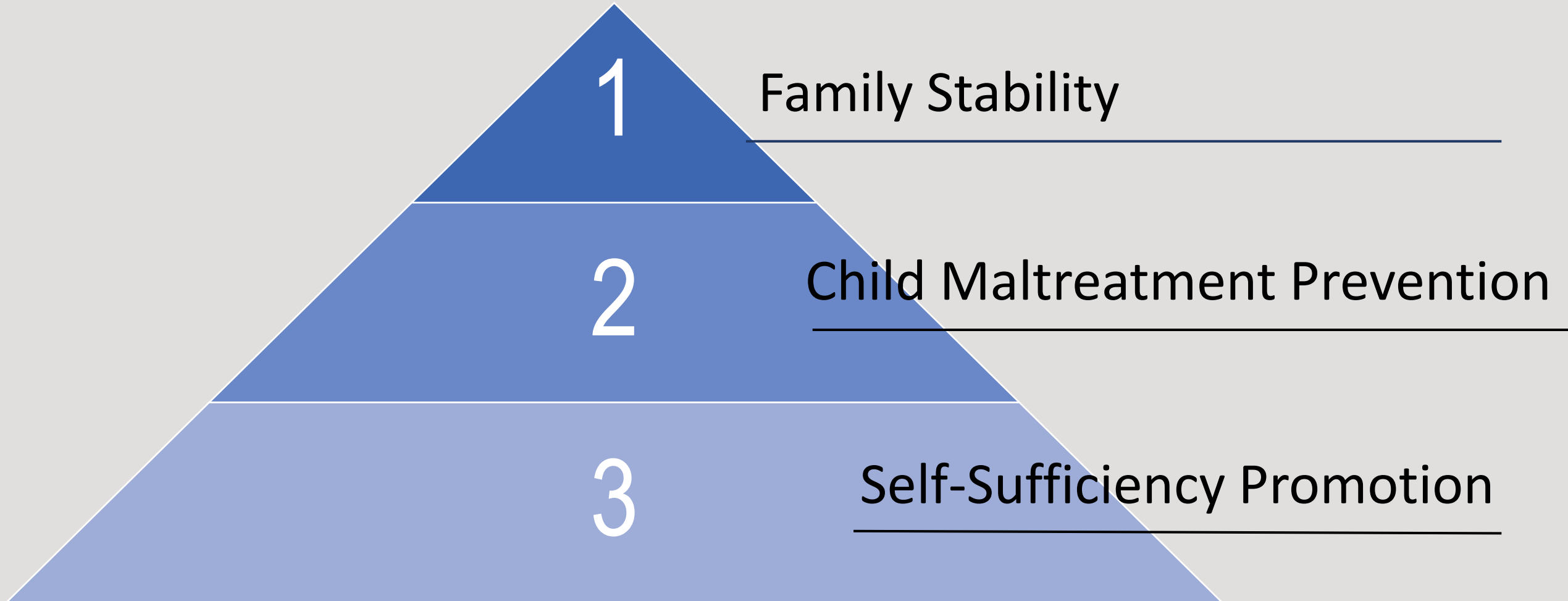


- **CalWorks & Child Welfare Linkages**

- Integrated Service Delivery
Facilitating communication and cooperation between CalWORKs.
- Prevention and Early Intervention:
Identifying and addressing risk factors early to prevent child maltreatment.
- Family-Centered Approach:
Developing tailored service plans

Kern County's Prevention Strategy:

Family Stabilization Program and Linkages Project





Coordinated Case Planning:

By aligning case plans, families are able to address economic needs, wellbeing and child safety concerns with reduced conflicting requirements.

Resource Optimization:

Families are able to benefit from both programs ensuring access to a broader range of services, such as mental health support, housing assistance, and employment services.

Cross Training Staff on CALWORKS and Child Welfare Programs to increase understanding of available Services

Teaming and Funding Optimization by participation in CalWorks meetings and trainings and conversely inviting CalWorks to Child Welfare trainings and convenings.



Thank You

Susan Lawol

Kern County DHS- Child Welfare

CalAIM & Linkages

phone: 661-557-8256

email: lawols@kerndhs.com



Linkages and Prevention in Calaveras

Mayle Johnson (Deputy Director)



BREAK

A photograph of two women sitting at a table in an office environment. The woman on the left has dark hair pulled back and is wearing a light blue button-down shirt, looking towards the other woman. The woman on the right has curly hair and is wearing a grey sweater, gesturing with her hands as if speaking. The background shows a window with a grid pattern. The word "Conversation" is overlaid in white text in the center of the image.

Conversation



AB 135
CalWORKs
Family
Reunification

Eligibility for CalWORKs Family Reunification (CWFR)

- All CalWORKs-eligible children were removed from the home and temporarily placed in out-of-home care.
- The family was receiving CalWORKs cash aid when the child(ren) was removed.
- CWS or a court has determined that the provision of cash aid, childcare, and/or reunification services is necessary for reunification, and a reunification plan is in development and/or in effect.



Assembly Bill 135 & CWFR Policy Changes

AB 135 (Chapter 85,
Statutes of 2021):



Amended Welfare
and Institutions
Code (WIC) Section
11203



Allows reunification
parents who were
receiving aid when
the child was
removed to also be
eligible **to receive
cash aid and child
care services** if the
county has
determined that
they are necessary
for reunification



Increases the
temporary absence
period from up to
180 consecutive
days to up to 6
months.

MPP Section 82-812.671:

The CWS **OR** court has determined that the provision of cash aid, childcare, and/or reunification services is necessary for reunification and a reunification plan is in effect

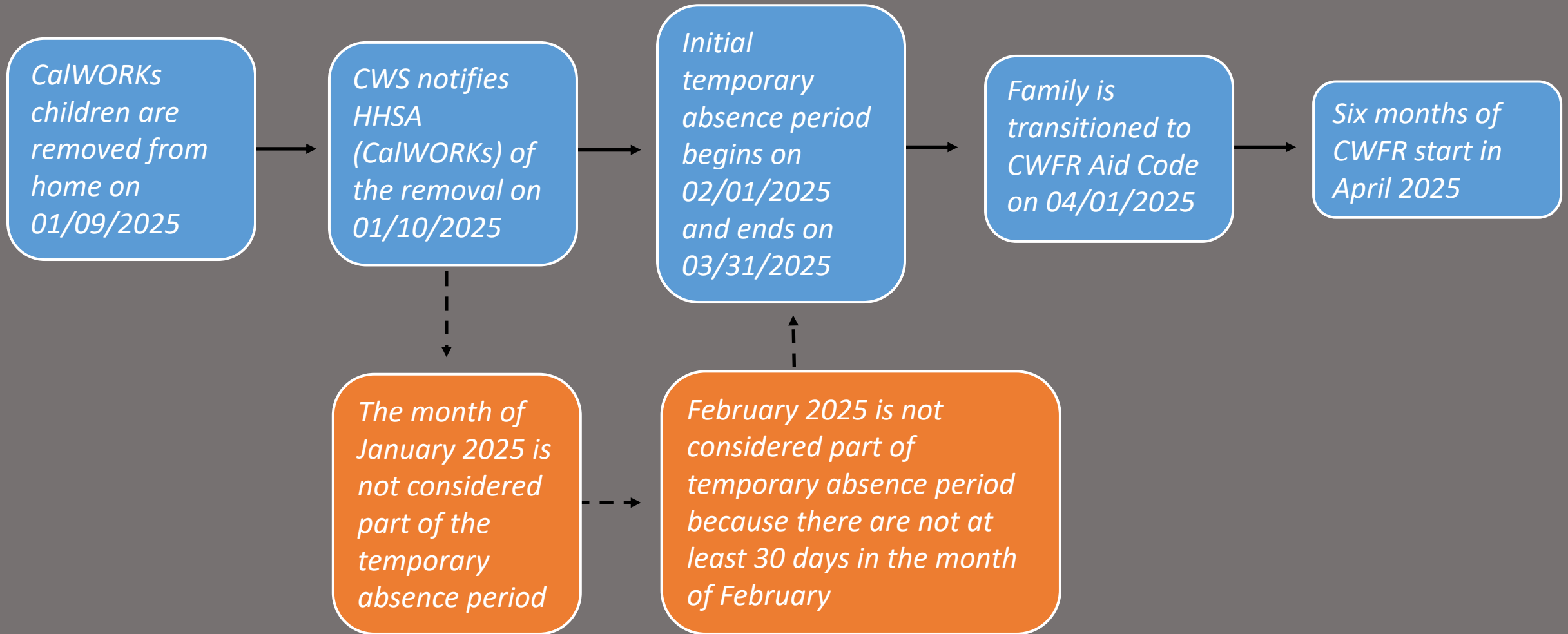
Upon notification that CWS **OR** a court recommends FR and the reunification plan includes a recommendation for the provision of cash aid as necessary to support reunification, the CalWORKs worker must start FR in accordance with the reunification plan and continue the CalWORKs cash grant for a maximum of six months if the family is otherwise eligible. A court order is not necessary to initiate FR. Existing reunification plans that do not already include a recommendation for the provision of cash aid must be amended prior to cash aid approval.

Initial Temporary Absence Period

When all CalWORKs eligible children are removed from the home by the CWS agency:

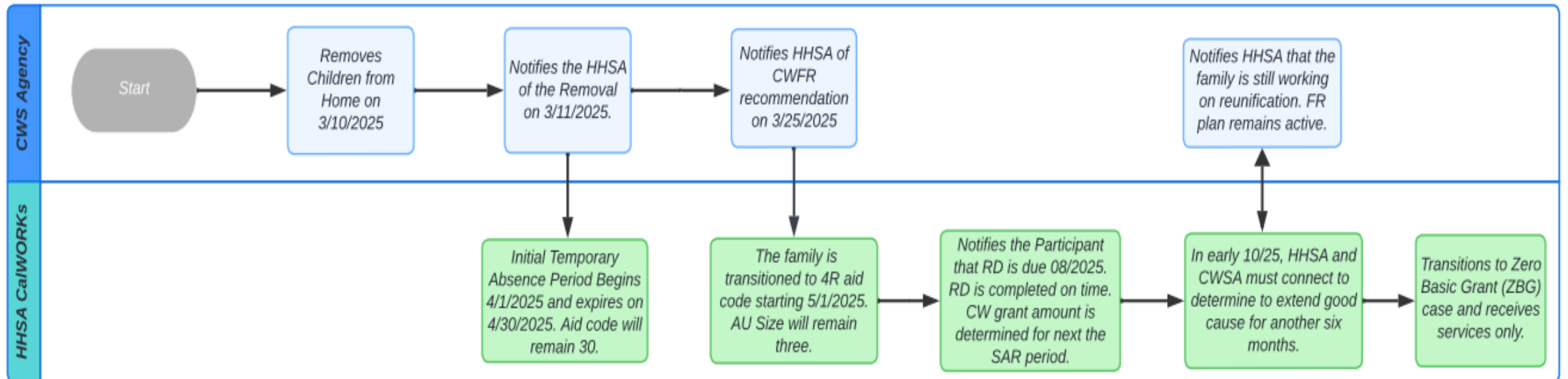
1. The children will be considered temporary absent for one full month. The family will not be discontinued.
2. The CWS agency should provide a notification to the HHSA on whether CWFR will be recommended before the end of the initial temporary absence period.
3. If the family is recommended for CWFR, the HHSA will transition the family to CWFR after temporary absence period has ended.
4. If HHSA receives notification that there will not be a recommendation for CWFR or does not receive a notification, then the family is discontinued from CalWORKs.

Initial Temporary Absence Period - Visual



Process Map for CWFR Cash Aid

- CW Family Composition: 3 (1 Parent + 2 Children)
- Current Aid Code: 30
- RD Due: August 2025



CWS FR Case Plan vs. WTW Plan

CWS FR Case Plan

- Families will not be subject to WTW noncompliance rules and risk financial sanctions.
- Minimizes conflicting requirements between WTW, child welfare, and families.
- Recognizes balancing work, training, and responsibilities can be challenging.

WTW Plan

- Must be used when providing additional activities and services not included in the case plan (i.e., education).
- Eases transition to WTW post-reunification.

CWS Case Plan Requirements

Welfare and Institutions Code 16501.1

Reasonable services, or active efforts, in the case of an Indian child, for family reunification must be documented unless the juvenile court determines otherwise.

CWS Case Plan Requirements

Per Division 31-206 to 225:

- The case plan goal
- Any changes in
 - Treatment services
 - Treatment providers
 - Changes in placement
- A description of the parent/guardian compliance with the written case plan
- Cooperation in keeping appointments

Create CWS Case Plan CWFR in CWS/CMS

1. Create a new case

2. Select "Other service Objective"

3. Enter "Child care for trial home visits" and "Cash aid for basic needs"

	Participant	Service Objective Type	Projected Completion Date
1	Benjamin(17)	Complete homework	06/06/2025
2	Benjamin(17)	Other Service Objective	06/06/2025

Participants

1	J. Benjamin(17)
---	-----------------

Projected Completion Date

Check to select all participants

Date: 06/06/2025

Go to View by Participant

Service Objective

Other Service Objective

Service Objective Detail

Other Service Objective (up to 5)

Additional Description for Participant

Child care for trial home visits
Cash Aid for basic needs

Ready Case [C, Benjamin] -> Case Plan [In Progress]

Update CWS Case Plan in CWS/CMS

File Edit Search Action Associated Attach/Detach Window Help Toolz

1. Open Existing Case Plan

2. Go to Service Objectives page

3. Add "Good cause granted to extend six-month temporary absence to meet reunification plan."

4. Click to update the plan

Service Objectives

ID	Participant	Service Objective Type	Projected Completion Date
1	J, Benjamin(17)	Other Service Objective	06/06/2025

Projected Completion Date
 Check to select all participants
Date: 06/06/2025

Service Objective
Other Service Objective

Service Objective Detail
Other Service Objective (up to 5)

Additional Description for Participant
Child care for trial home visits
Cash Aid for basic needs

Progress (for Case Plan Update)
Good cause granted to extend six-month temporary absence to meet the reunification plan.

OK - Go to Update
All Service Objectives Met/Progress recorded. Continue with Update

Ready Case [C. Benjamin] -> Case Plan [In Effect]

CWFR Best Practices

- Notify the CalWORKs worker as soon as possible to ensure timely transition to cash aid and services
- Assess the family strengths, needs and goals regarding services needed to begin CalWORKs FR.
- Coordinate services and resources with the CalWORKs partners to reduce stress and eliminate contradicting plans and goals.
- Team with the CalWORKs worker to monitor the case plan to achieve reunification and identify any extra barriers.
- Reach out to CDSS with questions using the resource document.
- Partner with CFPIC for implementation resources

Conversation



Poll!



What's Next?





Thank You