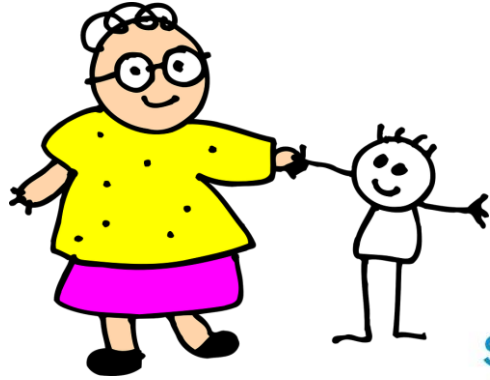


CalWORKs @ Linkages

CalWORKs and Family Resilience Branch
December 2022



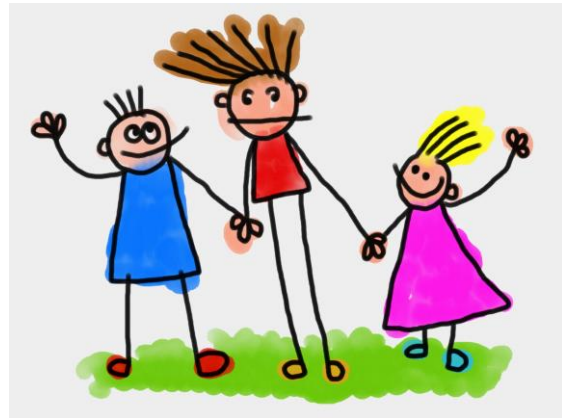
What is the Program



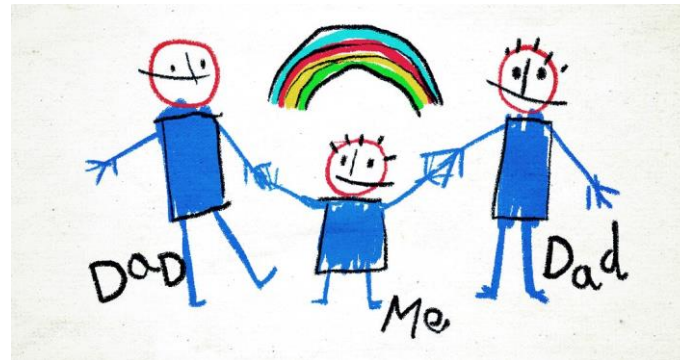
family_reunification
housing_support_program
homeless_assistance
home_visiting_program
family_stabilization
stage_one_child_care



supportive_services
wtw
cal-oar
immediate_need
calworks



diversion
cash_aid
welfare_to_work
hsp



CalWORKs and Welfare-to-Work

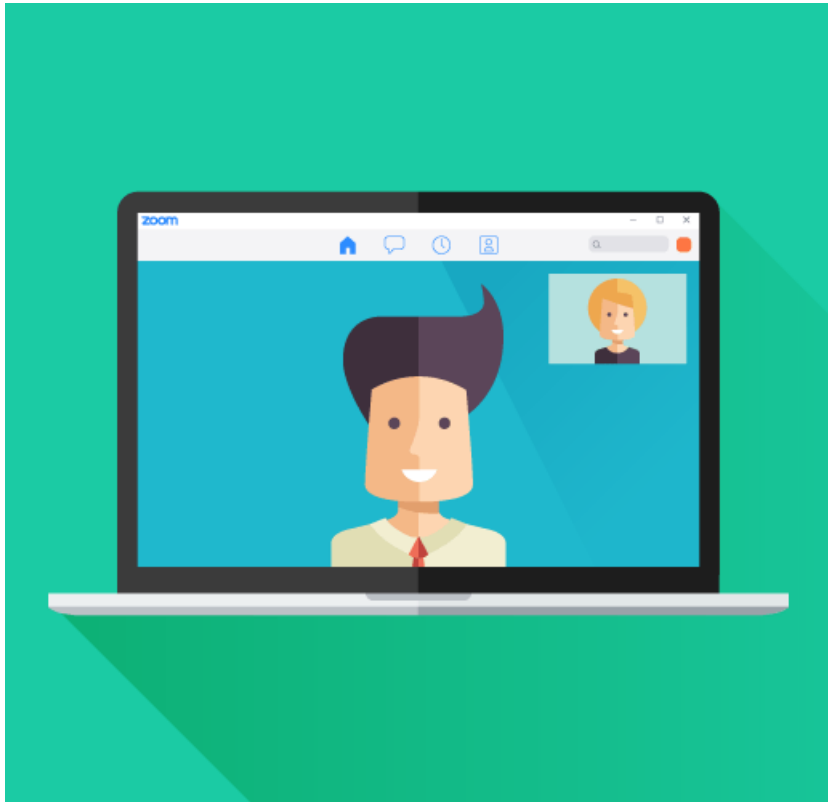


CalWORKs is California's version of the federal Temporary Assistance for Needy Families (TANF) program. The program provides 60 months of cash grants and welfare-to-work (WTW) services to low-income families with children. Children remain eligible for assistance up to age 18.

As a condition of receiving aid, unless exempt, clients are required to participate in the Welfare-to-Work program, offering a wide array of services and supports to resolve barriers, increase resiliency, enter and remain in the workforce.

- Employment
- Education
- Barrier Removal

WTW Flow



- Orientation
- Online CalWORKs Appraisal Tool (OCAT)
- Family Stabilization
- Job Club
- Assessment
- WTW Plan

Supportive Services

Childcare

Ancillary

- Books for school/standard payment
- Job related

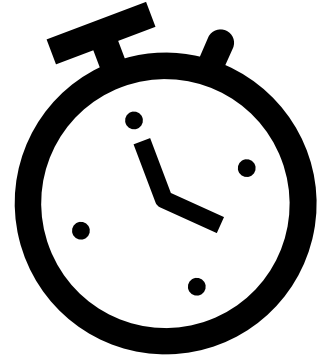
Transportation

Diapers

- Up to age 36 month



Hourly Requirements



Starting May 1, 2022, the WTW participation requirements changed:

Unchanged 20, 30, or 35 hours per week, depending on family configuration

Before Two sets of WTW requirements:

1. WTW 24 Month Time Clock—more flexible
2. CalWORKs Federal Standards --more rigid

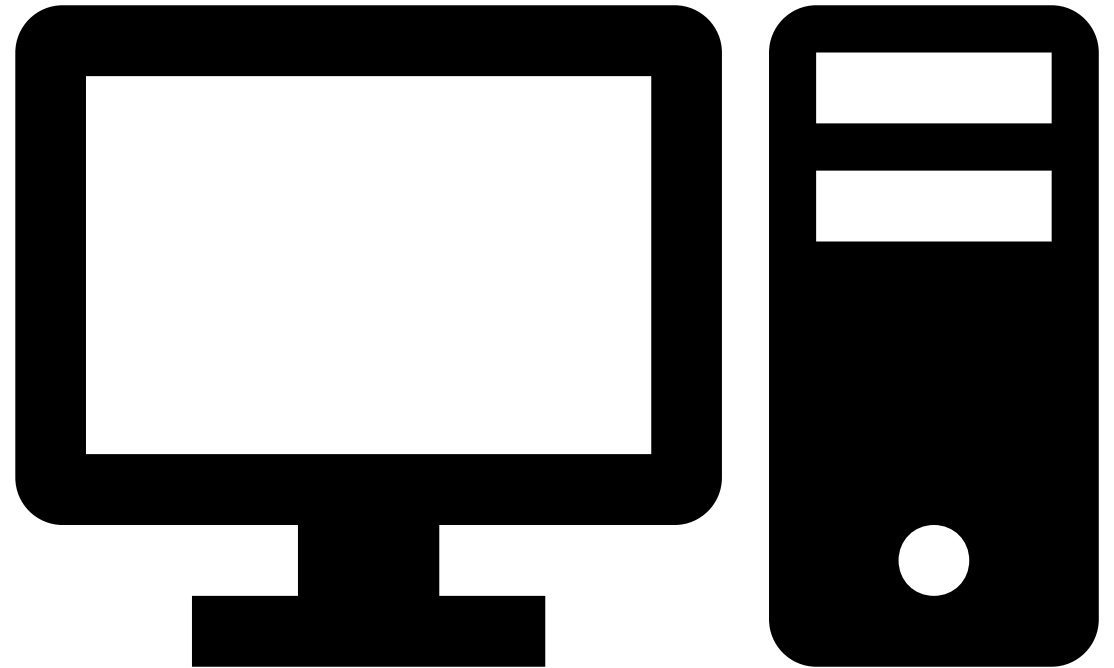
New Only one set of rules:

CalWORKs Hourly Participation Requirements—more flexible

Flexible = No “Core” hours requirement

Cell-Ed/Laptops4Life

- Cell-Ed/Laptops4Life
 - 1 in 5 adults in the U.S. lack reading skills
 - 1 in 4 adults lack access to digital resources
 - 1 in 2 adults need essential skills



SB1232

- **Advanced Standard Payment (ASP) for CalWORKs students**
- **Publicly funded postsecondary institutions, including Associate, Bachelors, Masters and PhD programs.**
- **Includes Adult Education**

Pregnancy Policy Enhancements



All Pregnant Participants are **WTW Exempt**

Prior to January 1, 2022, to qualify for an exemption due to pregnancy, required:

- Medical verification of pregnancy; and
- Proof affirming the pregnancy caused medical issues that impaired them from being able to participate in WTW activities or maintain regular employment, or
- Determination by the CWD that participation would not readily lead to employment

As a result, not every pregnant recipient was qualified for an exemption from WTW activities

New CWDs grant WTW exemptions **to all** pregnant recipients.

Self-Employment



Before Participation hours calculated as:

Profits / minimum wage

New

Self-attested hours of
participation/timesheet

Family Stabilization

Clarified that Family Stabilization can be used to purchase baby formula



Cash-based Family Reunification



Beginning July 1, 2022, adults in family/CWS court-ordered family reunification plans may be eligible to continue to receive CalWORKs cash aid and Welfare to Work services for a period of six-months.

- Currently, adults are eligible to Welfare to Work services and homeless assistance
- **Before** cash aid stopped due to removal of the child from the home
- **New** continue to receive cash aid

References:

- Hourly participation requirements: ALL COUNTY LETTER (ACL) 20-120 and ALL COUNTY INFORMATION NOTICE (ACIN) I-29-22
- Cell-Ed: ACIN I-55-20
- Pregnancy Exemptions: ACL 22-55
- Self-Employment: ACL 22-80
- Family Stabilization/baby formula: ALL COUNTY WELFARE DIRECTORS LETTER (ACWDL) dated June 3, 2022; and, ACWDL, dated August 02, 2022
- Cash-based Family Reunification: ACL xx-xxx