

Linkages: Prevention Framework

Primary → Secondary → Tertiary

August 23, 2022
10:30 AM - Noon



Housekeeping



Unless you are speaking as a presenter, please mute yourself



Use the chat to ask questions or comment. We continuously monitor the chat and will raise your questions with presenters as time allows.



Use the three dots by your name to change your name to reflect your program and county (or organization).

Ex: Mia CW Placer





Goals for Today

- Understand the History of Linkages and the Emergence of the Prevention Framework
- Explore the phases of the Prevention Framework
- Learn the Linkages 2.0 Theory of Change
- Learn about the work of the Linkages Prevention and Early Intervention Workgroup
- Hear about the CDSS commitment to the Linkages Prevention Framework and its fit with the Comprehensive Prevention Planning work going on in counties
- Share commitment to and examples of existing county Linkages Prevention and Early Intervention work





Danna Fabella
Linkages Project Director
Child & Family Policy Institute of CA

Linkages History & Prevention Framework

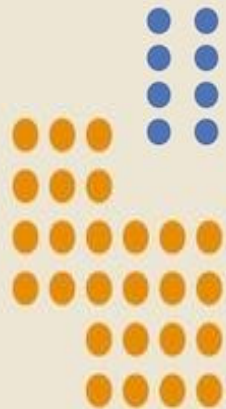
- 2000-2004: Linkages begins under the California Center for Research on Women & Families
- 2004: Transfers to CFPIC for implementation in volunteer counties
- 2007-2012/13: Federal Grant – CalWORKs and Child Welfare Collaboration to Improve Outcomes for Children & Families (AB 429)
- 2013 – 2016: OCAP/CWDA (Office of Child Abuse Prevention/ County Welfare Directors Association) Self- Sufficiency funding (AB 1603)
- 2019 – 2021: CDSS – Re-established commitment to Linkages; established statewide planning Committee (AB 153, 135)
 - Endorsed the Prevention Framework and a Theory of Change
 - Workgroups established to support:
 - Prevention,
 - FM/FR (Family Maintenance/ Family Reunification); Coordinated Case Planning,
 - Evaluation/Data
 - TAY (Transition Age Youth)
- 2022: Funded CFPIC to Support Linkages and the new Framework
- Today's focus: Primary – Secondary



Linkages 2.0 Theory of Change

- Through collaboration between the CalWORKs and Child Welfare programs, families in CalWORKs receive information, services and supports to prevent the occurrence and recurrence of child maltreatment, and families in Child Welfare receive information, services and supports to help them achieve child and family well-being, and to achieve and sustain financial self-sufficiency.
- Three levels of approaching coordination: today we will focus on PEI

Prevention Framework



A FRAMEWORK FOR PREVENTING CHILD ABUSE BY THE PROMOTION OF HEALTHY FAMILIES & COMMUNITIES



Vision

The vision of the Office of Child Abuse Prevention is to develop an integrated state-wide system that supports families to provide safe, stable, nurturing relationships and environments for their children. To achieve this vision, we have adapted the healthcare model for prevention, seeking to build protective factors through community and natural supports while mitigating risk factors.

Levels & Strategies for the Prevention of Child Abuse & the Promotion of Healthy Families and Communities

PRIMARY

These activities are directed at the general population to strengthen communities and improve child well-being by focusing on the social determinants of health, defined as the conditions into which people are born, grow, work, live, and age, and the wider set of forces and systems shaping the conditions of daily life.

Primary strategies may include:

- Reducing poverty and drug use
- Improving economic stability, transportation and access to supports
- Increasing social connections within the community
- Improving health and access to healthcare
- Improving school readiness, neighborhood safety and play areas for children
- Increasing communication and public awareness strategies for education, engagement, and outreach



SECONDARY

These activities are offered to populations that have one or more risk factors associated with compromised well-being or child maltreatment, such as poverty, parental substance abuse, young parental age, parental mental health concerns, exposure to violence, and parental or child disabilities. Programs seek to build protective factors and mitigate the risk factors.

Secondary strategies may include:

- Increasing accessibility to family resource centers that offer information and referral services to families living in low income areas
- Offering parent education programs in strategic locations
- Providing home visiting programs that provide support and assistance to expecting and new mothers
- Providing respite care for families that have children with special needs
- Increasing access to family-centered substance abuse treatment services
- Connecting families to public assistance programs such as CalWORKS and CalFresh

TERTIARY

These activities focus on families where child maltreatment has occurred, seeking to mitigate its trauma and reduce the negative consequences of the maltreatment and to prevent its recurrence.



Tertiary strategies may include:

- Providing family reunification services
- Providing permanency planning
- Offering parent support groups that help parents transform negative practices and beliefs into positive parenting behaviors and attitudes
- Providing mental health services for children and families affected by maltreatment
- Providing parent mentoring programs to families in crisis



PREVENTION FRAMEWORK & LINKAGES

Primary/Universal

Programs targeted at entire population to provide support and education before problems occur

- Family support info and resources for CalWORKs families

Secondary

Programs targeted at families in need to alleviate identified problems and prevent escalation

- ER/CalWORKs service coordination
- Family Stabilization & Home Visiting
- Differential Response

Tertiary

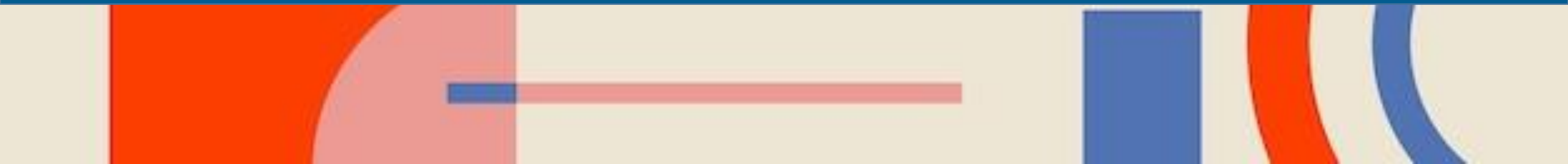
Provide interventions for children experiencing maltreatment

- FM/CalWORKs service coordination
- FR/CalWORKs service coordination



Stuart Oppenheim
Executive Director
Child & Family Policy
Institute of CA

Juliet Cox
Deputy Executive Director
Child & Family Policy
Institute of CA



Linkages PEI Theory of Change:

Primary Prevention

Primary prevention:

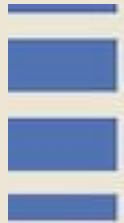
- **IF** CalWORKs staff provide Child Abuse Prevention information to CalWORKs recipients and the families receive services to address potential barriers,
- **THEN**, families will have the opportunity to
 - Increase parenting skills
 - Increase financial stability
 - Increase housing stability
 - Increase resiliency, and
 - Increase child and family well-being
- **SO THAT**, families can provide safe, stable, nurturing relationships and environments for their children,
- **AND** there will be a decrease in referrals of CalWORKs families to Child Welfare.

Linkages PEI Theory of Change: **Secondary Prevention**

- **IF** there is coordination of early intervention services between CalWORKs and Child Welfare (e.g. Family Stabilization, Kinship Navigator and Differential Response)
- **THEN**, families will have the opportunity to
 - Increase parenting skills
 - Increase financial stability
 - Increase housing stability
 - Increase resiliency, and
 - Increase child and family well-being
- **SO THAT**, families can provide safe, stable, nurturing relationships and environments for their children,
- **AND** there will be a decrease in re-referrals to Child Welfare and decrease the likelihood of entering into foster care.

Linkages PEI Work Plan

- Resource Template and County Guidelines Development
- Coordination with Family Engagement Guidelines Task Group
- Identify or Develop a Secondary Prevention Screening and Assessment Process
 - How will it fit with OCAT
 - Explore previous efforts
- Identify Linkages PEI work going on in counties now





Protective Factors Building Strong Families:

Resources and
Tips

Why Protective Factors?

Protective factors help families succeed and thrive, even in the face of risks and challenges. There are many ways that you can build on your own family's strengths and offer support to other families when they need it.

Five Protective Factors



Parental Resilience

Resilience is managing stress and functioning well, even when things are difficult.



Social Connections

It's easier to handle parenting challenges when positive relationships with family, friends, and neighbors are consistent.



Knowledge of Parenting and Child Development

By learning what children need in order to thrive, you can provide them the best start in life.



Concrete Support in Times of Need

Knowing where to get help in times of need can make things a lot easier.



Social and Emotional Competence of Children


Helping children develop social-emotional competence teaches them to manage emotions and build healthy relationships.

Primary Prevention: 5 Protective Factors Resources & Tips

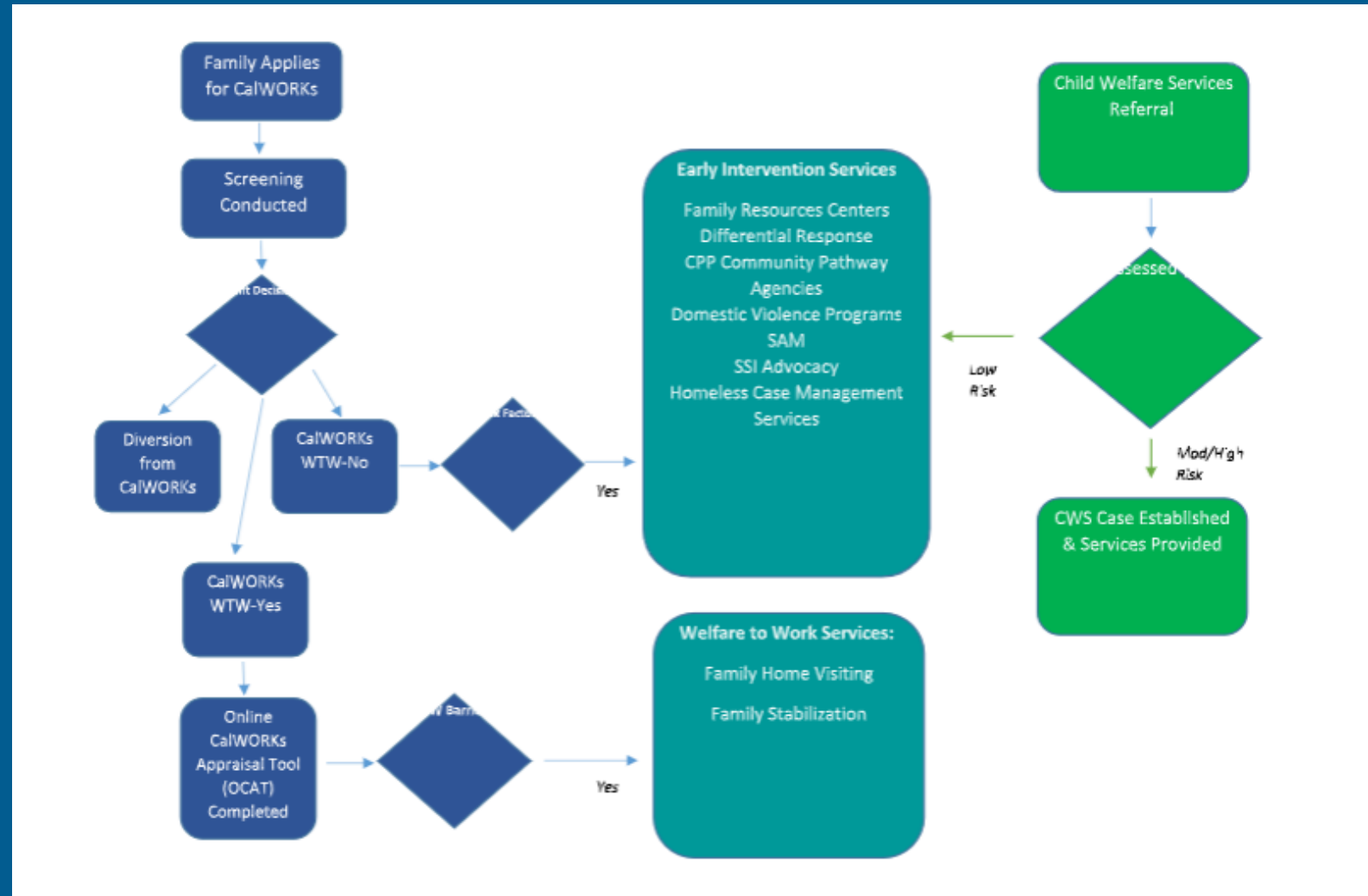


Input for Further Development

How would you envision using this with CalWORKs applicants and recipients?



Linkages: Secondary Prevention Pathways




Level	Strategy	Description	Essential activities	ST outputs/ outcomes	LT Outcomes/ Impacts
Primary Prevention	CalWORKs Prevention	Referral of all TANF applicants & recipients to community-based prevention services	Engaging families in discussion on protective factors/resiliency Distribution of Protective Factor information to all families	Service access in community Increase in protective factors for families ⁱ Increased engagement & completion of activities Decreased barriers to employment	<input type="checkbox"/> Improved child & family well-being <input type="checkbox"/> Reduced Adverse Childhood Experiences (ACEs) for children <input type="checkbox"/> Reduced referrals to CWS <input type="checkbox"/> Reduction in child maltreatment <input type="checkbox"/> Increased employment
Secondary Prevention	CalWORKs families without CWS involvement Recipients: Early Intervention for Welfare to Work recipients Early Intervention for those recipients not eligible for Welfare to Work so not eligible for FS, etc.	Provision of family strengthening services to families as part of CalWORKs case plan (Home Visiting, Family Stabilization - Intensive Case Management) Provision of Family strengthening services from community – Comprehensive Prevention Planning/Community	Assessing at Application and Annual Renewal and Referring to and providing CalWORKs specialized services (Home Visiting, Family Stabilization, Intensive Case Management) Screening (tool to be developed) for risk factors for families not being assessed via OCAT.	Increased engagement and completion of services Increase in protective factors for families Increased engagement & completion of activities/compliance Decreased barriers to employment	<input type="checkbox"/> Improved child & family well-being <input type="checkbox"/> Reduced ACEs for children <input type="checkbox"/> Reduced referrals to CWS <input type="checkbox"/> Reduction in child maltreatment <input type="checkbox"/> Increased employment

Linkages Prevention: Activities & Outcomes

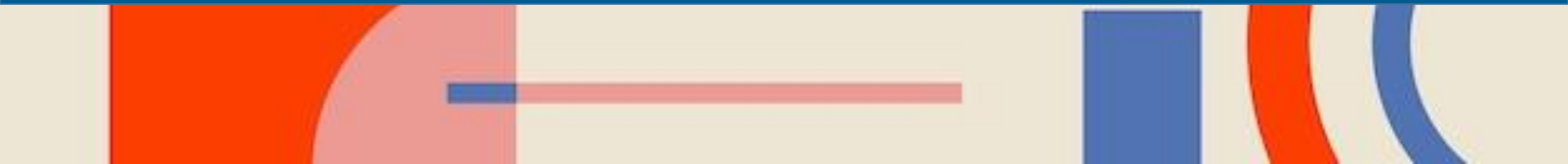
What are you doing?

- Padlet: tell us about any Linkages prevention and early intervention activities you have been doing in your county



Damien Ladd
Bureau Chief
CalWORKs, Family
Empowerment and
Engagement Division

Hillary Konrad
Bureau Chief
Office of Child Abuse
Prevention (OCAP) Bureau





CALWORKS AND CHILD WELFARE PREVENTION PARTNERS

CALWORKS AND CHILD WELFARE PREVENTION PARTNERS

- Long-term exposure to the stresses of poverty affects adults' core capabilities (such as organizing, planning, self-control, and monitoring), resulting in a risk factor for child maltreatment.
- CalWORKs provides cash aid and employment services to needy families—essential partner for primary, secondary and tertiary prevention.
- Services include:

Family Stabilization	Domestic Violence and Mental Health
Substance Abuse	Housing Assistance

CALWORKS AND CHILD WELFARE CROSSOVER—WHAT DOES THE DATA SHOW?

In Quarter 3 of Calendar Year (CY) 2021, there were a total of 820,198 CalWORKs recipients and a total of 328,412 clients involved in a referral to Child Welfare Services (CWS). A data match was performed and a total of 44,610 were linked between the two populations (5.4% of the CalWORKs population was referred to CWS and 13.6% of the CWS Referral population was on CalWORKs, see Table 1). Of the 44,610 CalWORKs recipients referred, 19,165 were involved in a referral that was evaluated out while 31,659 were involved in a referral that was investigated.

Table 1. CalWORKs Recipients Involved in a Referral to CWS

Age at Beginning of Time Period	Total CalWORKs Recipients	Total Clients Referred to CWS	Both CalWORKs and Referred to CWS	Percent of CalWORKs Referred to CWS	Percent of Clients Referred to CWS on CalWORKs
Under 1	28,746	21,989	1,834	6.4%	8.3%
1-2	65,450	14,127	3,908	6.0%	27.7%
3-5	108,007	24,192	6,452	6.0%	26.7%
6-10	190,856	44,080	10,724	5.6%	24.3%
11-15	192,985	49,428	9,852	5.1%	19.9%
16-17	63,555	16,797	2,536	4.0%	15.1%
17 and under	649,599	170,613	35,306	5.4%	20.7%
18 and over	170,599	157,799	9,304	5.5%	5.9%
Grand Total	820,198	328,412	44,610	5.4%	13.6%

CALWORKS AND CHILD WELFARE CROSSOVER—WHAT DOES THE DATA SHOW?

Of the 4,318 substantiated victims while on CalWORKs, 3,913 had mothers and/or fathers identified as the perpetrators. Of the 3,913 victims, 1,758 (44.9%) had parent perpetrators that were also on CalWORKs during Quarter 3 of CY 2021. Of the 995 unique parent perpetrators on CalWORKs, 280 (28.1%) had previously been victims of a substantiation of abuse or neglect. Table 5 displays the age of the parent perpetrators at the time of the earliest substantiated referral in Quarter 3 of CY 2021.

Table 5. CalWORKs Recipients Age 0-17 with Substantiations While Receiving CalWORKs: Parent Perpetrators Who Were on CalWORKs and Previously Victims of Substantiated Child Abuse or Neglect

Age	Parent Perpetrators on CalWORKs	Prior Substantiated Victims	Percent
Under 20	21	15	71.4%
20-29	460	177	38.5%
30-39	397	85	21.4%
40 and over	117	3	2.6%
Total	995	280	28.1%



COMPREHENSIVE PREVENTION PLANNING

VISION FOR CALIFORNIA



An integrated state-wide system that supports families to provide safe, stable, nurturing relationships and environments for their children.

To achieve the vision silos must be broken and partnerships across multi-disciplinary sectors must be built

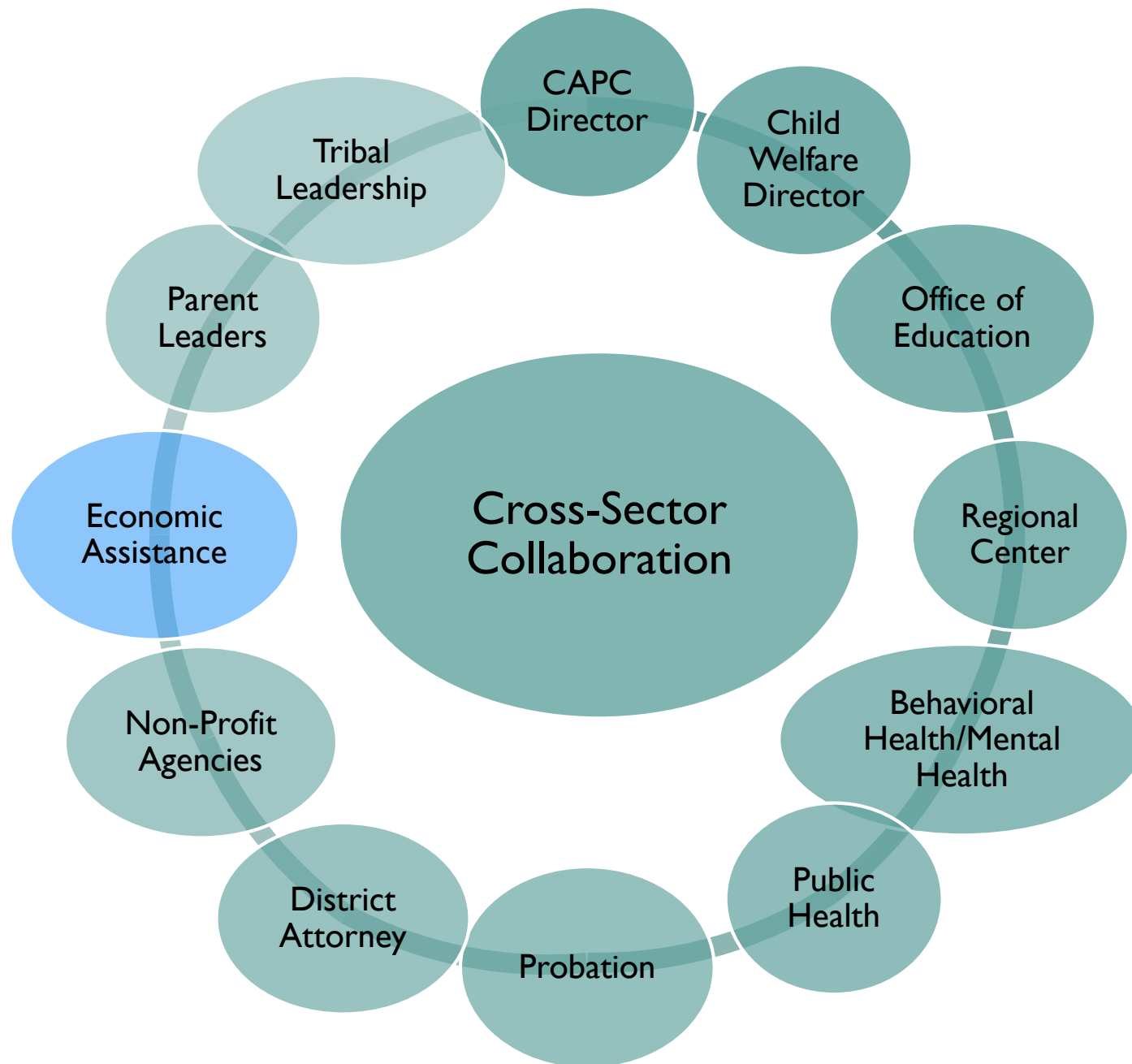
SHIFTING THE MINDSET



- Shifting the mindset from a reactive approach to a proactive approach
- From services to improving the conditions in which we live, grow, play (SDOH)
- From prevention to well-being
- Equity and community engagement
- Lifting the voice of those with lived expertise

CALIFORNIA'S FAMILY FIRST PREVENTION SERVICES PROGRAM (FFPS)

- Leverages current prevention efforts to reach a broader audience and reach families sooner
- Built from a comprehensive plan that includes culturally appropriate and responsive services that are tailored to meet the needs of local families who are disproportionately represented in the child welfare system
- Rooted in a cross-sector collaborative approach
- Meets the federal requirements of FFPSA Part I and goes beyond to deliver services across the prevention continuum
- Access to a Community Pathway approach to service delivery for early community-based services



FFPS PROGRAM AND THE COMPREHENSIVE PREVENTION PLAN

Family First Prevention Services (FFPS) Program

In accordance with [WIC §16588](#), a local title IV-E agency opting into the FFPS Program is required to submit a Comprehensive Prevention Plan (CPP).



Comprehensive Prevention Plan

Primary Prevention Strategies

Secondary Prevention Strategies

Tertiary Prevention Strategies
(must encompass FFPSA Part I)

EXAMPLES OF ACTIVITIES INCLUDED IN THE CPP

Primary, Secondary **and** Tertiary Prevention

- Any primary and secondary service that meets local needs
- Emphasis on services that meet the culturally diverse needs of the community
- Evidence-based practices and programs not included in the CA Prevention Plan
- Services tailored to meet the needs of families who are disproportionately represented in the child welfare system, including Native American and Alaskan Native families, families of color, and LGBTQ+
- Locally determined through collaborative planning and implementation process
- **Above and beyond FFPSA Part I** limitations

Population Served

- As determined in the local CPP based on the needs of the community

ROLE OF CALWORKS/LINKAGES IN THE CPP CROSS-SECTOR COLLABORATIVE

- Inclusion of Data to determine Target Population/Candidacy Population and Services
 - Asset Mapping
 - Needs Assessment
 - Gap Analysis
- Primary, Secondary, Tertiary Prevention
 - Inclusion of Linkages services (i.e. Welfare to Work, Family Stabilization, CalWORKs Home Visiting)
- Development of Policies and Procedures
 - Coordinated case planning
 - Leveraging of existing MOUs
- Evaluation & Continuous Quality Improvement (CQI)
- Leveraging funds for sustainability of programs & services



HOW DO I GET INVOLVED?

OPT IN COUNTIES

49 Counties

Alameda	Amador	Butte	Calaveras	Colusa	Contra Costa	El Dorado	Fresno	Glen	Humbolt
Kern	Kings	Lake	Lassen	Los Angeles	Madera	Marin	Mariposa	Mendocino	Merced
Mono	Napa	Nevada	Orange	Placer	Riverside	Sacramento	San Benito	San Bernardino	San Diego
San Francisco	San Joaquin	San Luis Obispo	San Mateo	Santa Barbara	Santa Clara	Santa Cruz	Shasta	Sierra	Siskiyou
Solano	Sonoma	Stanislaus	Sutter	Tulare	Tuolumne	Ventura	Yolo	Yuba	

CONTACT INFORMATION



Contact for FFPSA Prevention Services (Part I) and Comprehensive Prevention Plan questions:

ffpsapreventionservices@dss.ca.gov

For additional information, please access the FFPSA website:

cdss.ca.gov/inforesources/ffpsa

How Do You See Your Linkages Program Fitting Into Comprehensive Prevention Planning?

Poll:

- Is CalWORKs included in your Comprehensive Prevention Planning now? (Yes, No, Unsure?)
- Is Linkages included in your Comprehensive Prevention Planning now? (Yes, No, Unsure?)
- Will you bring it to your Comprehensive Prevention Planning Team? (Yes, No, Unsure?)



Coming Attractions

- September Quarterly Newsletter
- 9/29/22: Peer sharing on this topic
- October (TBD): Linkages and AB 135
- November 30-12/2: Linkages Convening, Hyatt Sacramento



The background features a variety of abstract geometric shapes in orange, blue, and pink. In the top left, there is an orange rounded rectangle with four small red circles below it. To its right are vertical bars in pink and blue. Further right is a semi-circle divided into a light beige and orange half. In the top right corner, there is a grid of orange dots. The bottom section contains a large orange shape on the left, a blue semi-circle in the center, and a blue vertical bar with three horizontal blue bars on the right. A pink horizontal bar is also visible near the bottom center.

Thank you for attending!